



CHAMBER CONNECTIONS

MISSION STATEMENT

The Raytown Area Chamber of Commerce supports our business community to enhance the quality of life for our citizens.

INSIDE THIS ISSUE:

Membership Luncheon	1
2013 Corporate Sponsors	
President's Corner	2
Mega Chamber Office Party, Member Market	3
Healthcare Information	4
Chiefs Day, New Membership & Renewals	5
Members in the News	6
Member Events	7
Calendar	8



**SEPTEMBER MEMBERSHIP LUNCHEON**



UPDATE FROM  
SUPERINTENDENT  
DR. ALLAN MARKLEY

**WHEN: Wednesday, Sept. 25**

- Networking begins at 11:00am, Lunch at 11:30am

**WHERE: RQS Educ. & Conference Center, 10750 E. 350 Hwy.**

\$15.00 per person - RSVP by Monday, Sept. 23

**SPONSORED BY**



**LUNCHEON RSVP POLICY**

- Reservations *must* be made by NOON on the Monday before luncheon.
- After the deadline, there will be a \$3.00 extra charge.
- No shows will be invoiced with a \$2.00 fee added.

**2013 RAYTOWN CORPORATE SPONSORS**



Advanced Eyecare  
Blue Springs Optical

COMCAST  
BUSINESS





### Board of Directors

**Shawna Burns**, Chair of the Board  
Commerce Bank

**Loretha Hayden**, Chair Elect  
Lutfi's Fried Fish

**Bruce Stansberry**, Secretary/Treasurer  
Liberty Tax Service

**Pat Ertz**, Past Chair  
Public Water Supply District #2

### At Large Members

**Christopher S. Payne**  
Monopoly Acquisitions LLC

### Board Members

**Kaylie Bergman**  
Rok'it Advertising

**Pam Clark**  
Clark's Appliances

**Steve Mock**  
Mock Building Co.

**Andy Powelson**  
PBI Industries Inc.-McDonald's

**Patrick Searcy**  
Power On Technologies

**Peggy Sundquist**  
The UPS Store

**Derek Ward**  
KCP&L

**Michelle Williams**  
Hope Network of Raytown

**Mahesh Sharma**, Liaison  
City of Raytown

**Dr. Allan Markley**, Liaison  
Raytown Quality Schools

**Steve Guenther**, Liaison  
Raytown Main Street Assoc.

### Staff

**Vicki Turnbow**, President  
president@raytownchamber.com

**Kyle Phillips**, Operations Manager  
kphillips@raytownchamber.com

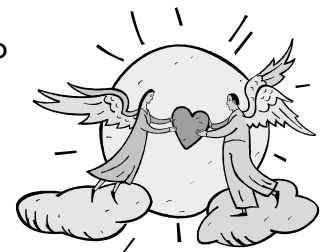
## PRESIDENT'S CORNER

Thank you to those who have also sent their condolences on the passing of my Grandmother. She was an amazing woman. The family consisted of 10 children, 30 grandchildren, 75 great-grandchildren and one great-great grandson. She catered for three Missouri Governors and could plan and organize just about anything up until the day she died. She wrote a cookbook that also depicted life on the farm and as the oldest of all the grandkids, it makes me smile to know that I have some of the same qualities she had. Yes, for those of you that are thinking, wow was that three deaths in her immediate family in three months – yes you are correct. Thank goodness for Kyle to handle things while I was gone and to the Board for allowing me the time to take the time needed.

This month you will receive information about the 2014 Chamber Directory and Community profile. This publication is the only Raytown “community profile” that is distributed. Also remember to double check those membership update forms and send them back to us. This is what will be printed in the directory. Questions or if you didn't receive the information, please let us know.

If there is anything I can do, please do not hesitate to contact me. My door is always open, come by anytime!

*Vicki Turnbow, President*



The following statement has been sent to the Elected officials who represent the Raytown area in Jefferson City both in the House and Senate after the approval of it at the Board meeting on August 8. Eight members voted in favor, one voted against and two were not in attendance.

*After reviewing information provided to the Board of Directors, we support a competitive environment for small business but we believe HB253 is detrimental to our school district and social services in the Raytown Community. The Board recognizes the importance of quality schools and vibrant social services for a healthy community. Therefore, the Raytown Area Chamber of Commerce Board of Directors voted to support the veto of HB253.*

### **ROUND TABLE DISCUSSIONS TO PREPARE FOR 2014**

In preparing for 2014, Chair Elect Loretha Hayden would like to hear from the current membership. All meetings will be held at the Chamber office (5909 Raytown Trafficway) and will include refreshments. Chamber President, Vicki Turnbow will join in on the discussions. There will be a limit of 20 spots. Don't wait – reply to the Chamber for either of the two following time slots. We will try to limit each session to one hour.

- **Thur. Morning, September 19 at 8:30 am** (coffee and donuts to be provided)
- **Thur. Afternoon, September 19 at 4:30 pm** (refreshments to be provided)

The format is open so please feel free to bring any suggestions/comments/concerns. We hope you can join us!

**MEGA CHAMBER OFFICE PARTY** 8th Annual

**WED. OCTOBER 30**  
**4:30-7:30 PM AT**



8200 Hillcrest Road KCMO  
 Off I-435 & 87th Street

**DON'T MISS THE ULTIMATE NETWORKING EVENT!**

**MEET CHAMBER MEMBERS FROM:**

Belton ♦ Blue Springs ♦ Grain Valley  
 Grandview ♦ Harrisonville ♦ Independence  
 Lee's Summit ♦ Peculiar ♦ Pleasant Hill  
 Raymore ♦ Raytown ♦ South Kansas City

**METRO EXPO ~ FOOD CASH BAR ~ FUN!**

If your business would like to have a table-top space to promote to Chamber members from across the Metro area, call the Chamber office and reserve your Expo table. *Don't wait - there are only 10 Raytown Chamber expo tables available!*

**OPPORTUNITIES AVAILABLE:**

**TITLE SPONSOR**

~ \$1500.00 *SOLD* (1 only)  
 ~ Marketing recognition, banner, Expo table & 15 rsvp's



**MEGA SPONSOR \$250.00** *Deadline to be on program: Oct. 16*

~ Includes full (8') Expo Table, 4 reservations, logo on program, sponsor sign and ad in 4 Chamber Newsletters (Raytown, Lee's Summit, Grandview, S. Kansas City)

**METRO EXPO DISPLAY** *Deadline Oct. 16*

~ \$150.00 ~ Full (8') Expo Table & 2 reservations  
 ~ \$85.00 ~ Half (4') Expo Table & 1 reservation  
 ~ *Do you need electricity? ~ Will you have a stand-up floor display?*

**MEGA CHAMBER OFFICE PARTY**

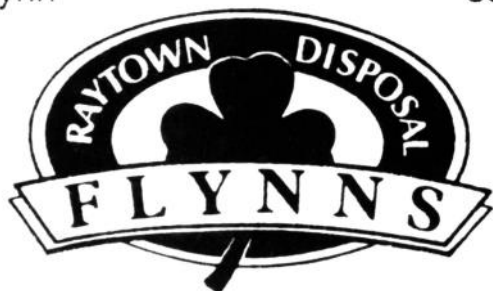
~ \$15.00 per person  
*Deadline to RSVP ~ Oct. 23*



**MEMBER MARKET**

Jim Flynn

358-1211



P.O. BOX 9425 RAYTOWN, MO 64133

**Joel Lawson Advanced Wealth Strategies**

Joel Lawson, CWS, RFC

*Certified Wealth Strategist® - Registered Financial Consultant*

Bus: 816.358.4966 Cell: 816.522.7816  
 www.joellawsonwealthstrategies.com  
 joel.lawson@cfdinvestments.com

Todd LeSage Cell: 816.716.6067  
 Todd.Lesage@cfdinvestments.com



*Advisory Services are provided through Creative Financial Designs, Inc., a Registered Investment Adviser, and Securities are offered through CFD Investments, Inc., a Registered Broker/Dealer, Member FINRA/SIPC. Joel Lawson Advanced Wealth Strategies is not owned or controlled by the CFD Companies*

## HEALTHCARE DEADLINE FAST APPROACHING FOR ALL BUSINESSES

The most prominent deadline coming up is a notice of the Marketplace/Exchange that the employer must provide to all employees *by October 1, 2013*. In the C-mail there are two documents available to download. The first attachment applies to employers currently providing a group health plan. The second attachment is for the employers who don't offer a group health plan. The employer completes the second and third page as applicable to their situation.

If you have any questions about your business, contact **Brad Bukaty, Benefits Consultant, with Bukaty Companies, (913) 345-0440. [BBukaty@Bukaty.com](mailto:BBukaty@Bukaty.com)**

U.S. Small Business Administration



The Small Business Administration and Small Business Majority are excited to announce the next set of Affordable Care Act 101 weekly webinar dates.

Each week, small business owners can learn the basics of the Affordable Care Act and what it means for their company and employees, including insurance reforms, the small business health care tax credit, the new health insurance marketplaces, and employer shared responsibility provisions. SBA representatives help small business owners understand the facts of the Affordable Care Act so they can make informed decisions about providing health insurance for their employees.

The Affordable Care Act 101 takes place every Thursday from now through the opening of the marketplaces in October. Below are the dates for upcoming presentations.

**September 5 - September 12 - September 19 - September 26**

To register, go to the event calendar at [www.smallbusinessmajority.org](http://www.smallbusinessmajority.org). For more information on how the new health care law affects small businesses, check out [www.businessusa.gov/healthcare](http://www.businessusa.gov/healthcare).

# Thinkin' Green

\*Drop off your old, broken holiday lights\*  
at any participating location during the holiday season

**NOVEMBER 17, 2013 THROUGH JANUARY 26, 2014**

Re think Re do Re new

Mid-America Regional Council  
Solid Waste Management District

MISSOURI  
DEPARTMENT OF  
NATURAL RESOURCES

Southeast Enterprises is extending its deadline to sponsor the 2013-2014 Holiday Light Recycling Drive to Thursday, September 12, giving you more time to go green! Join more than 165 business locations and organizations throughout the Greater Kansas City Area in support of sustainability and jobs for Southeast employees with intellectual and developmental disabilities. Last year, Southeast and its community partners helped to keep more than 32,000 pounds of unusable holiday lights out of the landfills and more than 160 Southeast employees working throughout the calendar year!

Go to [www.southeastenterprises.org/kcrecyclelights](http://www.southeastenterprises.org/kcrecyclelights) for more information!

# Come Join the KC CHIEFS for... RAYTOWN CHAMBER DAYS

**Sunday, October 20<sup>th</sup>**

vs. Houston Texans

**Sunday, October 27<sup>th</sup>**

vs. Cleveland Browns

**Sunday, November 24<sup>th</sup>**

vs. San Diego Chargers

ALL ORDERS MUST BE  
RECEIVED & PAID IN ADVANCE OF THE GAME  
TICKETS WILL BE DELIVERED TO THE CHAMBER  
THE WEEK OF THE GAME  
(SUBJECT TO AVAILABILITY)



**Tickets for the  
Raytown Chamber Days  
ONLY \$35!**

Minimum \$44 value - Upper Level Seats

Contact the Raytown Chamber  
at 816-353-8500 or [staff@raytownchamber.com](mailto:staff@raytownchamber.com)  
Fax: 816-353-8525

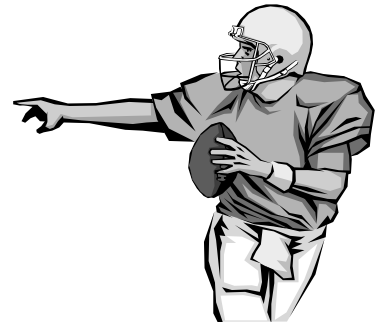


## Raytown Chamber Day Tickets

Tickets for Oct. 20  
*must be ordered by*  
Friday, Oct. 4

Tickets for Oct. 27  
*must be ordered by*  
Friday, Oct. 11

Tickets for Nov. 24  
*must be ordered by*  
Friday, Nov. 8



## CHAMBER RENEWALS

**PBI Industries, Inc.-McDonald's**  
2008 Patti Powelson, Andy Powelson

**H&R Block 2001** Marsha Clark

**Edward Jones 2007** George N. Koepf

☺ **Eric J. Etheridge, DDS 2012**

☺ **Leath & Sons, Inc. 2012** Jeff Leath

☺ **Westhues Electric, Inc. 1991**  
Keith Westhues, James Westhues

**The Golf Doctor 1998** David Skitek

**Bickford Senior Living 1999**  
Carol Rigsby, Alyson Jones

**Maywood Printing Company, Inc.**  
1998 Colleen Pruetting, Dick Collins

**Mid-Continent Public Library-  
Raytown Branch 2010** Susan Haley

## NEW CHAMBER MEMBERS

**ROYAL RIDGE CHAPTER  
OF ABWA**  
**Becky Adney**  
12801 E. 49th St.  
Independence, MO 64055  
816-215-6743  
[Becky@rgneds.com](mailto:Becky@rgneds.com)  
Not for Profit Organization  
Recruited by Vicki Turnbow

☺ *We would like to thank our members who gave 110%.*

*Welcome!*

## Our Members in the News

**Westridge Gardens Rehabilitation and Care Center** has earned a 5-Star rating from the Centers for Medicare & Medicaid Services (CMS) for Quality Measures. The CMS system rates nursing homes nationally in the areas of health inspections, nurse staffing, measures of medical quality of care, and fire safety. They describe Quality Measures as "tools that help measure or quantify healthcare processes, outcomes, patient perceptions, and organizational structure that are associated with the ability to provide high quality health care." CMS found that Westridge Gardens provides "effective, safe, efficient, patient-centered, equitable, and timely care."

A leading provider of short term post hospital rehabilitation, long term, and specialty care, Westridge Garden's is founded on a tradition of health care excellence and with a philosophy of family being at the heart of everything we do. Westridge offers services including rehabilitative therapies seven days a week, wound care, palliative, and hospice care.

For additional information about the Professional and Personalized services at Westridge Gardens Nursing and Rehabilitation Center, please contact the ElizaBeth Clayton at 816-358-3535.

For additional information about CMS's Nursing Home Compare, visit their website at <http://medicare.gov/nursinghomecompare/search.html>.

**CareSpot Express Healthcare** invites employers to an **Open House on Thursday, September 12<sup>th</sup>, from 7:30 to 8:30 am** at 9490 E. 350 Highway. Learn about CareSpot's broad range of employer solutions. Meet the staff, tour the new urgent care / occupational health center and network with other local businesses. Continental breakfast provided. RSVP by September 9<sup>th</sup> to Carla Van Nostran at 816-304-6961 or [Carla.VanNostran@CareSpot.com](mailto:Carla.VanNostran@CareSpot.com).

### August Morning Coffee at ...



**Research Family  
Physicians,  
10000 E. 66th Terr.**



## RAYTOWN ARTS & MUSIC FESTIVAL - SEPTEMBER 28

The Raytown Parks Department will be hosting an Arts and Music Festival, in conjunction with the Friends of Raytown Parks, and the Raytown Artist's Association, and the Raytown PTA, on September 28, at Kenagy Park (9609 E 79<sup>th</sup> St), starting at 11:00am through 6:00pm. The Park will be set up with artists around the main walking trail displaying their works and selling to the public. There will also be art activities for kids to participate in one of the shelter houses in the park, sponsored by the Raytown PTA, as well as balloon artists and face painters for kids to enjoy.

During the event there will be music from The Guess Y, Linda Shell and the Blues Thang, Ja Lion, and KC Kelsey. There will be food vendors and adult beverages provided by Applebee's at the event for participants to enjoy.

The Raytown Parks is proud to host this second annual Raytown Arts and Music Festival. Our first event was a great success, and we hope that you won't miss year's event with Artist's and musicians from all over the Kansas City Metro area.

For any questions about the event please contact the Raytown Parks Department at 358-4100



## Upcoming Member Events

### **SEPTEMBER MORNING COFFEE**

**Mark your calendars:** The next "Morning Coffee" will be held at **Mid-Continent Public Library-Raytown Branch, 6131 Raytown Road**. Come by anytime between **7:30 to 8:30 a.m.** to have a cup of coffee and network with other businesses within the community. An added bonus will be to see the business who has agreed to host the Morning Coffee and find out what they can offer to you.



The Membership/Business Retention Committee would like to invite you to a **LUNCH AND LEARN** on **Wed., October 9**. It will be held in the Hy-Vee Community Room starting promptly at 11:30 to 12:30. Registration will open at 11:15. The cost will be \$10.00 per person and will include lunch.

*Reservations are required and due by Fri. Oct. 4. Limited to 40 attendees.*

### **"Is Your Business & Marketing Plan Revolving or Evolving?"** presented by **Curt Northup, Business Partner Marketing Coach**

Business Partner Coaches provide strategic market planning and coaching support serving businesses, large and small across all sectors to help them stay well positioned and visible in their target markets.

## **OCTOBER MEMBERSHIP LUNCHEON**

### **JACKSON COUNTY UPDATE**

Presented by **County Executive, Mike Sanders**

During the October luncheon, the Chamber will conduct its Annual Membership Meeting. As we prepare for the future, the 2014 Officers and the Class of 2016 will also be presented to you and voted on. Be sure to your reserve seat to this luncheon now.

**WHEN: Wednesday, October 23** - Networking begins at 11:00am, Lunch at 11:30am

**WHERE: REAP Conference Room, 9300 E. 75th Street**

\$15.00 per person - RSVP by Monday, Sept. 23



Sporting Kansas City invites local Chamber's to participate in Chamber of Commerce Night. This event will be held on **Wednesday, October 23** when Sporting KC takes on CD Olimpia. The cost is just \$40 per person. Included in this price is a pre-match professional mixer with all-inclusive food and beverage and a South Stand ticket (\$55 value). The pre-match mixer will run from 5:00 to 6:45 pm with the game starting at 7:00. You must be 21 to attend the pre-match mixer.

If you are interested in purchasing tickets go online to <https://oss.ticketmaster.com/html/go.html?I=EN&t=sportingkc&o=78&g=1044>. (The link is in the C-mail) The promo code is **chambertix**. A table will be set up just outside the Budweiser Beer Garden area for you to get your pre-match mixer wristband and name tag.

Questions, do not hesitate to contact the Chamber office.

*If you are interested in a ribbon cutting or after hours event for your business, please call 353-8500 or e-mail [staff@raytownchamber.com](mailto:staff@raytownchamber.com) and get it on the calendar.*



5909 RAYTOWN TRAFFICWAY  
RAYTOWN, MO 64133-3860


816-353-8500 FAX 816-353-8525  
www.raytownchamber.com

RETURN SERVICE REQUESTED

Prsrtd Stnd  
U.S. Postage Paid  
Permit # 2316  
Kansas City MO 64133

**DATED MATERIAL**

# SEPTEMBER 2013

SUNDAY	MONDAY	TUESDAY	WEDNESDAY	THURSDAY	FRIDAY	SATURDAY
1 <i>Check your weekly Chamber Connections C-mail for an up-to-date calendar</i>	2 <b>Chamber office Closed</b> LABOR DAY	3 <b>12pm</b> Mbr. Serv.-Recruit	4	5	6	7
8	9	10	11	12 <b>7:15am</b> Board of Directors Meeting	13	14
15	16	17 	18	19 <b>8:30am &amp; 4:30pm</b> Round Table Discussions	20 <b>8:00am</b> Government Relations Committee	21
22	23 <b>12:00pm</b> ➤ <b>DEADLINE</b> ◀ For lunch reservations	24	25 <b>11:30am</b> <b>MEMBERSHIP LUNCHEON</b>	26	27 <b>8:30am</b> Membership/Business Retention	28 <b>11am-6pm</b> Raytown Arts & Music Festival
29	30					