

# CHAMBER CONNECTIONS



#RaytownChamber90



## MISSION STATEMENT

The Raytown Area Chamber of Commerce and Tourism supports our business community to enhance the quality of life for our citizens.

[RAYTOWNCHAMBER.COM](http://RAYTOWNCHAMBER.COM)

APRIL 2020

### 2020 CHAMBER CORPORATE SPONSORS



Click on logos & links for more information

### INSIDE THIS ISSUE:

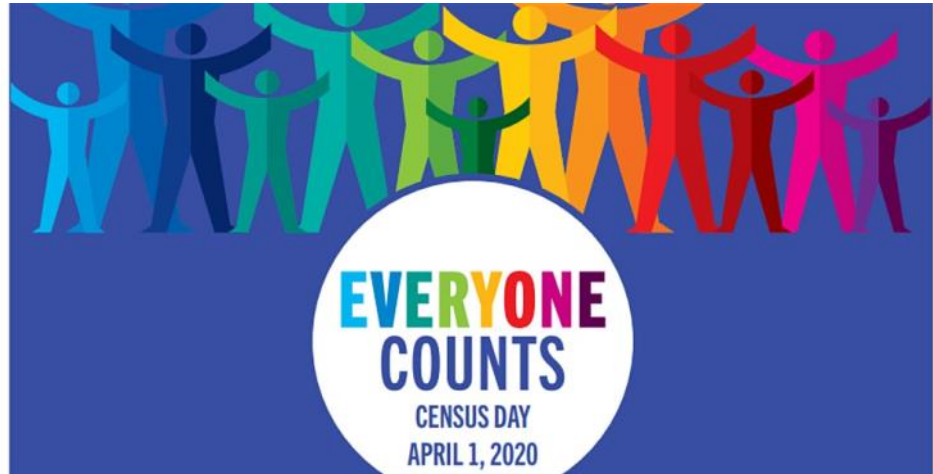
April, Census Day, National Volunteer Week, 2020 Corporate Sponsors	1
President's Corner & Networking with the President Dates	2
Member Market	3
A Look at the Last 30 Days	4
A Look at the Last 30 Days	5
Capital Campaign Update & Rock Island Trail Construction Photos	6
Renewals, New Members & Each One Reach One Campaign	7
Updates from the Members	8
Updates from the Members	9
Updates from the Members	10
Updates from the Members	11
Updates from the Members	12
Host a Networking Event	13
Raytown Night at the Royals	14
Golf Tournament	15
Coronavirus Resources	16
April Calendar	17



APRIL 8, 2020  
4:30 TO 5:10 P.M.

[CLICK HERE TO REGISTER TO RECEIVE THE ZOOM INVITE](#)

You will be able to use video or just call in to be a part of the Raytown Chamber's first virtual after hours. Keep your fingers crossed this works!



**National Volunteer Week** is a time for organizations across the country to honor **volunteers** for the irreplaceable impact of their time and energy all year round.

April 19 - 25, 2020





[THINKRAYTOWNFIRST.COM](http://THINKRAYTOWNFIRST.COM)

*Board of Directors*

**Melvin Norrington**, Chair  
Everygy

**Tamara Wheeler**, Chair Elect  
United Consumers Credit Union

**Dr. Ryan Crider**, Secretary/Treasurer  
Metropolitan Community College -  
Longview

**Chiki Thompson**, Past Chair  
Raytown Water Co.

*At Large Members*

**Kaylie Baker**  
Rok'it Advertising

*Board Members*

**Robert Atkins**  
Farmers Insurance

**Steve Dempsey**  
Missouri Job Center

**Lauren Jilek**  
Partners in Primary Care

**Stephen Losey**  
BeneFocus

**Al Maddox**  
Cave Spring

**Linda Roberts**  
Raytown Lee's Summit Community  
Credit Union

**Brian Ross**  
Edward Jones

**Brian Wagler**  
ServPro of Raytown/East KC

**Phylis Goforth**, Liaison  
Raytown Main Street Assoc.

**Chief Matt Mace**, Liaison  
Raytown Fire Protection Dist.

**Dr. Allan Markley**, Liaison  
Raytown Quality Schools

**Missy Wilson**, Liaison  
City of Raytown

*Staff*

**Vicki Turnbow**, President  
[president@raytownchamber.com](mailto:president@raytownchamber.com)  
[staff@raytownchamber.com](mailto:staff@raytownchamber.com)

**PRESIDENT'S CORNER**

March 2020 will be a time in our lives we will never forget. At the time of this writing, Jackson County is in a Stay At Home order. Only essential businesses are open and the new cases of the Coronavirus continue to rise in the state of Missouri. Even with all the turmoil and the unknowns - true heroes are popping up everywhere. Who would have guessed those who keep our food supply going, would be on the front line? But they are, each and every day. We always know our Police, Fire and EMS workers along with the military will be there for us but the young man sacking my groceries? My step-son Scott, driving an 18 wheeler to make sure product gets where it needs to be in a timely manner? What about those associated with health care? Take caring of their normal patient load but also taking on the additional risk of becoming exposed and taking it home to their families. Truly amazing! What about the school district and community volunteers making sure our kids have meals during this difficult time!

I was asked recently what do I miss. Most of all I miss hugging my kids and grandkids. Kris and I have chosen not to be around them. So, we get concerts with a guitar on Facetime from Harrison and pictures from Blake and Henry about their home schooling (Henry holding mommy's hand while he plays on the Ipad—he loves his mommy).



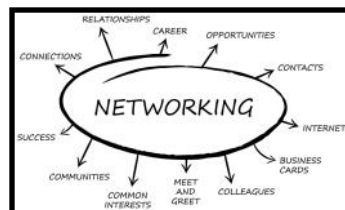
In the month of April, we will have a virtual After Hours on April 8 and hopefully throughout the month a few videos of our recorded conversations with some key people in our community.

Thank you to those who have replied to my email asking for all members to check in. **Continue to send me those emails.** We will get through this together.

Also, I will be putting together a Recovery Team Task Force made up of individuals that can begin to meet virtually right now and be able to have a plan in place once this is all over. Not sure what that will look like so stay tuned. If you are interested in being apart of this task force, let me know.

Remember my office is always open!

*Vicki Turnbow, President*



**"Networking with the President"**

- Everyone is responsible for their own expenses.
- Held at different times
- Breakfast/coffee 7:30
- Lunch 11:15
- After Hours 4:30
- Courtesy registration so I can let the business know how many of us will attend. We will make every attempt for all who pre-register to sit together.
- No set agenda
- Great way to support these businesses.

Dates so far:

- April & May cancelled
- June 18 - Lunch 11:15 @ Lutfi's Fried Fish [Click Here to Register](#)

# MEMBER MARKET



## NEED A RENTAL HALL?

PARTIES ~ DANCES ~ RECEPTIONS ~ MEETINGS

**\$100 discount with this ad!**

OFFICE HOURS: Monday-Saturday 8 am-12 pm

5101 BLUE RIDGE CUTOFF 816-356-4962



Waste & Recycling Service for Home & Business



wcawaste.com

(816) 358-1211

### Market your business to more than 400 Members in the CHAMBER CONNECTIONS.

Business card, 1/4 page, 1/2 page or full page  
 Space Available - 3 months or 1 year run  
 All marketing may include a website link.  
 All marketing must be prepaid.

Contact the Chamber for more information.

**Your business ad here!  
 Contact Chamber staff before  
 the 15th of the month to be in  
 next month's  
 Chamber Connection!**



# EMPLOYEE BENEFITS



## EXCLUSIVE CHAMBER MEMBER INSURANCE PROGRAM

Save on group medical coverage and more with this exclusive program.

Why pay more for coverage when there are better options available to you as a Chamber member? You and your employees deserve the best insurance benefits at the best possible price. We can improve your program now – don't wait any longer. Call today!

- Savings for groups of 5 to 5,000 enrolled
- Exclusive group medical insurance programs
- In addition to medical, discounts available on dental, vision, disability, life, critical illness, accident, and pet
- Fully insured, level funded, and self-insured composite rates
- HSA / FSA/ COBRA Administration
- Ongoing support from your dedicated account team, access to our HR Help Desk, and compliance support
- Online reporting and enrollment services
- Onsite open enrollment



**Kent Friend**  
 Employee Benefits and Property & Casualty Consultant  
 kfriend@bukaty.com  
 P: 913.777.7535  
 C: 816.803.7406  
 F: 913.345.2608





# *A Look at the Last 30 Days!*



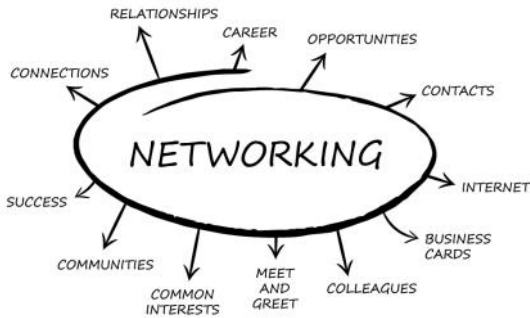
Mid-Continent Public Library hosted a grand opening and rededication ceremony on Friday, March 6, 2020 to commemorate the opening of the Raytown Branch. Remember the library is closed but open virtually! [www.mymcpl.org](http://www.mymcpl.org)



A great time was had by at the 2nd annual Black and White Piccadilly hosted by the Raytown Main Street Association. The event was held at Hilton Garden Inn.



# A Look at the Last 30 Days



**Thank you to those who attended the March “Networking with the President” Series. We met for an afterhours at Stoney Creek Hotel & Conference Center’s bar located at 1801 I Bass Pro Drive in Independence. Rhonda Green and the Staff stayed and visited with us for over an hour. This was one of the last social gatherings for the Chamber before the**

**limits were placed in our area.**



**Attendees: Rene Purtee, Tamara Wheeler, Sam & Phylis Goforth, Pam Clark, Cindy Panza, John Ivey, Barb Keogh along with Stoney Creek Staff.**



## Getting to Know the New Logo

New Shape – the updated shape of the logo pays tribute to the Rock Island Rail

It only seemed right to change a portion of the crossroads to also represent the Rock Island Rail as well as the new Rock Island Trail.



By adding “and tourism” to our name, we hope to capitalize on our position on the trail to be a center of information for any visitors.



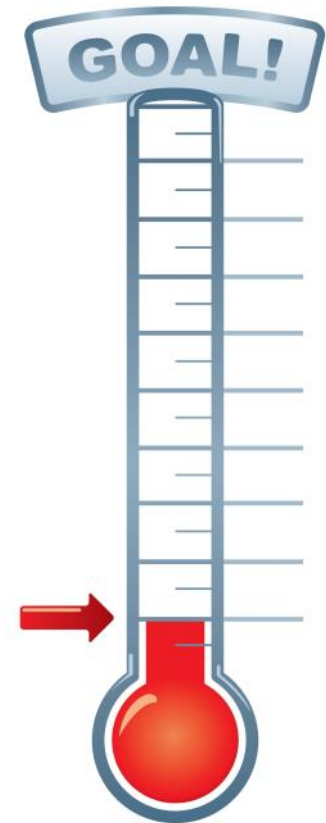
# Building Capital Campaign Update

## Raytown Chamber of Commerce Building Foundation Capital Campaign Update

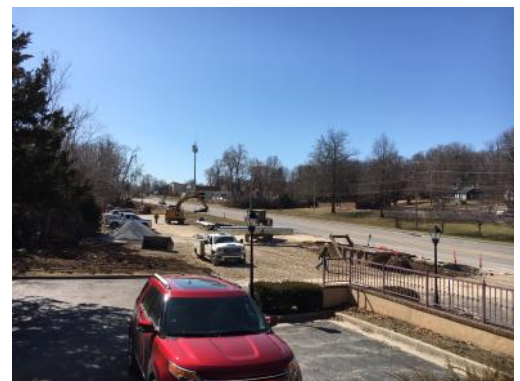
At the beginning of March the Building Foundation sent out 400 letters to current members, past chairs of the board, past presidents and those community leaders who may want to donate to the Capital Campaign to remodel the building from the outside in. Since the letters were sent out, we have received \$969 in cash donations, \$3,000 in pledges and Chamber President, Vicki Turnbow for her birthday on Facebook raised \$915. This is a good start. We know it is a tough time to raise money, but we hope those individuals and/or businesses will still want to donate. Remember all monetary donations will receive a charitable tax deduction letter.

If you need another copy of the Capital Campaign packet, let me know.

Questions, contact Vicki Turnbow at 816-353-8500 or email her at [president@raytownchamber.com](mailto:president@raytownchamber.com)



**Rock Island Trail Construction Photos March 2020**



## CHAMBER RENEWALS

☺ *We would like to thank our members who gave 110%.*

- ☺ **Advanced Eyecare**, Dr. Richard Wilson, Heather Bass, Dr. Melissa Enevoldsen, Dr. Jeffrey Harter, Dr. Dana Krause, Dr. Julie Lafraniere, Dr. Christine Mitts, Dr. Lauren Pachy 1985
- Better Business Bureau**, Dustin Johnson, Marvin Carolina, Sean Adams 2006
- Blue Ridge Presbyterian Church**, Ron Galvin 2004
- ☺ **Electrical Corporation of America**, Don Laffoon 1978
- ☺ **Evergy**, Zac Sweets, John Engelmann, Carol Macken, Melvin Norrington, Derek Ward 1979
- Grow In Peace Childcare**, Carla Hamilton 2014

- ☺ **Herndon Career Center**, Cheryl Reichert, Katie Zeiger, Nate Zier 2015
- Jackson County, Missouri** Miriam Hennosy 2013
- ☺ **Laurel Animal Hospital**, Dr. Loren Tucker 1978
- Raytown Christian Church**, Dr. Bill Tenny-Brittian, Phylis Goforth 2015
- ☺ **Raytown Educational Foundation**, Martha Cockerell 1997
- SERC – Raytown**, Katie Scott 2014
- ☺ **St. Regis Academy**, Robin Fisher 2014
- Sutherlands, LLC**, Mike Weber 2014
- ☺ **Tidal Wave Auto Spa of Raytown**, Larson Griffith, Mike Donnelly 2019

**Have you utilized your member benefits lately?**



## NEW CHAMBER MEMBERS

◆ Green Door Apartments  
 John Durrett  
 Location 6310 Raytown Road, Raytown, MO 64133  
 Mailing: 4741 Central #100 KCMO 64112  
 greendoorapartments@gmail.com  
 Recruited by: Self



### NEW MEMBER REFERRALS

Referrals can be companies you buy from companies that buy from you, or companies whom you have a connection with.

Help the Raytown Chamber continue to grow and be able to provide quality services to other businesses just like yourself.

Contact the Chamber office at 816-353-8500 or email [staff@raytownchamber.com](mailto:staff@raytownchamber.com) and we will contact them about joining the Chamber!

Thank you to the following Chamber member who have referred a business to us to contact about being a potential member:

**Refer a potential member and see your name here!**

**EACH ONE → REACH ONE**

- Who are your vendors?
- Who are some of your best customers?
- Who would benefit from sitting at this table?
- Who is in your contact list?



## Updates From Our Members



Advanced Eyecare Raytown is currently open for urgent care with limited hours. We are taking appointments for May and offering extensions on some contact lens prescriptions to order patients what they need until they can be examined. Also dispensing previously ordered glasses and contact and doing repairs where possible. Our Doctor is available to consult on urgent eye issues by phone 816-353-1872 or appointment. Mon, Tues, Thurs, Fri 8:00am-12:00pm. Visit our website at [www.healthyvisionkc.com](http://www.healthyvisionkc.com) or our Facebook page @aeraytown for updates.

## GO FOR CONVENIENCE ARVEST GO

The Arvest Go mobile banking app gives you easier and faster control over your accounts.

Download the Arvest Go app today!

(915) 261-2265  
[arvest.com/go](http://arvest.com/go)

ARVEST<sup>®</sup>  
BANK

Member FDIC

Fees, restrictions, and cut-off times may apply for some mobile banking services; visit [arvest.com](http://arvest.com) for more information. Messaging and data charges may apply, see your wireless carrier for details.

“Hi Raytown businesses from Autumn Terrace Health and Rehab! On behalf of our residents and staff, we welcome any and all cards/letters/emails to brighten our residents’ faces. We would even appreciate you dropping a note of encouragement to our hard working staff during this unprecedented time as well. Also, how about any already read magazines! They would be so very glad to pick up if needed. Anyone you can reach out to who might have them? Doctors/dental offices who don’t use them anymore or even those that are outdated! Contact or send to: Autumn Terrace, 6124 Raytown Road, Raytown, MO 64133 or email to [mkg102@reachlhc.com](mailto:mkg102@reachlhc.com)”



## Clark's APPLIANCES

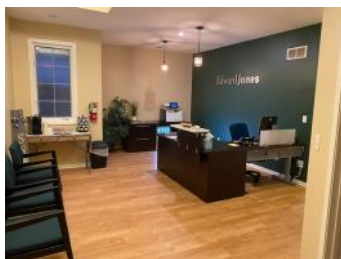
We found out Sunday that we were essential. It was a relief to know that we were going to be able to take care of customers that were already scheduled for delivery and then HOPEFULLY new ones. At present we have left our hours the same M-F8-5 and Sat 9-1. People do not need to come in and see us they can go to our web site and explore then call and talk to us. We can walk thru the product on the phone. It's not perfect and doesn't give you the touch and see in person, but it means you're not leaving your house. Pass the word we're not closing and want to keep employees busy. Call Pam Clark at 816-356-0505 for information and updates.



## Updates From Our Members

### Edward Jones MAKING SENSE OF INVESTING

Edward Jones is a privately owned company that began in 1922 in St. Louis, Missouri. Over the years we've grown and currently employ 18,000 Financial Advisors. My office is located at 11705 E. 350 Hwy Ste. E. Raytown, MO 64138. I selected Raytown because of the ties I have to the community. As a young child, my family resided in Raytown, near the Baptist Temple, which was renamed Graceway Church in more recent years. We moved to Lee's Summit when I got older and I graduated from the Blue Springs School district. I earned my undergraduate degree at UMKC.



I have worked in the financial industry for over 15 years, and selected Edward Jones Investments due to their community involvement and approach to investing. Helping individuals and businesses bridge the gap of where they are and where they financially want to be is important to me. Whether it be saving to ensure you don't run out of money in retirement, insurance to ensure you have enough money to pay for skilled nursing or final expenses, or businesses looking to offer retirement plans for their employees.

Our office continues to give back and offers educational events throughout the Kansas City area. Our next event is a webinar titled "Investing in an Uncertain Market". You can participate next month on either April 7th at 12:30pm or April 8th at 9am. Please contact the office to RSVP.

#### Brian Ross, Financial Advisor

11705 E. 350 Hwy Ste. E.  
Raytown, MO 64138

☎:(816) 291-4508 | [www.edwardjones.com/brian-ross](http://www.edwardjones.com/brian-ross)

## More Ways to Help You

*In times like these, it's important we do what we can to support each other. Starting now through May 1st, we're implementing more ways to help.*



**Extended Special  
Payment options**



**No late  
payment fees**



**No security deposit on  
reconnection services**



**New payment  
installment options**

**evergy**

## Updates From Our Members

Hilton Garden Inn - Independence is offering a “We Care” rate, interested click on the logo for details!



### Food Pantry:

Hope Network Food pantry is a nonprofit that seeks to assist those in the Raytown community who are food insufficient with a food pantry providing: **Pantry** staples, fresh milk, meat, produce and bread  
Open 1pm on Tuesday's, 3pm on Wednesday's and 6pm on Thursday's

**Toiletries:** body wash, shampoo/conditioner/personal grooming items, incontinence items, make up and deodorant as well as paper goods.

**Clothing/household goods** filled with donated (brand new returned) goods from Bed, Bath & Beyond like bedding and household goods, and items like bicycles, holiday decorations, personal care items, massagers, sheets and curtains.

### Additional Services:

Hope Network assists the Raytown Community with:

#### **Direct assistance:**

rent, utility and vehicle repair assistance, and works closely with the school district counselors and social workers for a list of needs for:  
supply needs throughout the year, and  
Christmas gifts in the month of December (qualifying applicants must register the first week of October to be considered for the Christmas assistance program)

#### **Thanksgiving boxes**

Vehicle donation to community members when/if they are donated

### Websites:

For more information visit our Facebook pages: “Hope Network of Raytown”, Golf Tournament page: “Tee Up 4 Hope” and our website: [www.hopenetworkraytown.org](http://www.hopenetworkraytown.org)

### Email:

Or email Executive Director Michele Workman at [michele.workman@hopenetworkraytown.org](mailto:michele.workman@hopenetworkraytown.org)

## “COVID-19 Curbside Pickup” only:

Place your order in 2 steps:



1. Order at <https://www.morganaskc.com/store>
2. Set up your curbside pickup appointment at <https://www.morganaskc.com/pickup>

**No orders will be given without an appointment time and to someone with a copy of the receipt and WITHOUT a fever or cough!**

## Updates From Our Members



**Technology working for you!**

VISIT US AT:  
5895 Raytown Rd # 101, Raytown, MO 64135  
108 SE 29th St, Topeka, KS 66605

MAIN: (816) 737-2900  
HELP DESK: (785) 861-8230

- Printer & Copier
- Hosting Services
- Network Design
- Backup & Recovery
- Managed IT Services
- Phone System Solutions
- Monitoring & Management
- IT Solution Implementation
- Business Network Consulting



Physical therapists provide interventions using telehealth by observing how the patient moves and performs exercises and activities. They then provide verbal and visual instructions and cues to modify how the patient performs various activities. They also may change the environment to encourage more optimal outcomes. Physical therapists use telehealth for quick check-ins with established patients, where a full in person visit may not be necessary. The process is easy. As long as the patient has a phone,

tablet or computer with a camera, we send a link to the patient. They follow the link and are directed to our video conference. This is an effective way to continue a patient's plan of care while also distancing for safety. Contact Katie Scott, PT, DPT, Clinic Director, 4227 Sterling, KCMO 64133 P: 816-356-3018; F: 816-358-5830; [www.serctherapy.com](http://www.serctherapy.com)

**SERC**   
Physical Therapy

### 24 Hour Emergency Response Services

- Catastrophic Storm & Wide Area Event Response
- Large Loss & Single Event Response
- Water Damage Services
- **Biohazard** & Crime Scene Services
- Fire Damage Services
- Total Project Management
- Coronavirus / COVID-19
- Contact Angie Geivett 816.267.2747 (1.800.SERVPRO)



SERVPRO RAYTOWN / EAST KANSAS CITY





## Updates From Our Members

# Sword of Joy | Consulting

Right now many business leaders need new strategies and ideas to navigate these tumultuous times. Organizational development specialist and business coach Tina Joy Cochran, President of Sword of Joy Consulting works with clients every day to

map out action plans and strategies that help organizations thrive and grow. She offers a free virtual strategy coaching session which can help assess where you are, discover where you want to go and design strategies to help you get there. **Now through May 10th, 2020, Raytown Chamber members will receive a second coaching session (\$97 value) for free.** Sign up to schedule your first session at [www.TinaJoyCochran.com](http://www.TinaJoyCochran.com). Learn more about Sword of Joy Consulting at [www.SwordofJoy.com](http://www.SwordofJoy.com)

We can handle many business areas for your members - so they can stay focused on running their company.



### Coronavirus & your Business

Contact us today to discuss

**Group Medical** - We have programs and products that are exclusive to us that will save your members money.

**Commercial P&C** - now more than ever you need to make sure all your policies are valid and what you need. Business income continuation, Cyber Security, employment Practices Liability, theft

**Human Resources** - We offer a free hotline to all our clients to help you through the tough situations or general questions

**Compliance Department** - Free compliance support to all our clients

**401K** - we manage nationwide over \$40 Billion - we are one of the biggest providers of money under management nationally

### **We offer the following:**

- 1) Online enrollment and monthly tracking plus live reporting for groups of 10 or more enrolled in medical insurance.
- 2) All adds and deletes
- 3) Concierge level service for the employees and the admin staff - We handle all insurance issues.
- 4) Live HR help desk
- 5) Compliance support
- 6) We shop all carriers each year to make sure you have the best program
- 7) Cobra/ FSA / HSA at reduced rates
- 8) Exclusive nationwide programs - other brokers do not have!
- 9) Wellness programs / best practices/ contribution strategies
- 10) Exclusive - zero cost RX pharmacy program for 450 drug

### **Kent Friend**

National Strategic Benefit Consultant

Commercial Property & Casualty

4601 College Boulevard, Suite 100 | Leawood, KS 66211

Direct: **913.777.7535** | Cell: 816.803.7406

[KFriend@bukaty.com](mailto:KFriend@bukaty.com)

## *Host a Networking Event in 2020*

### **HOST A NETWORKING EVENT AT YOUR BUSINESS!**

The Raytown Chamber is looking for businesses to host networking events in 2020. The A.M. Connections Networking events are scheduled for the third Tuesday of each month and by hosting, you agree to provide the coffee from 7:30 to 8:30 a.m. The sponsorship for each event is \$50.00. Listed below are the dates available.

For those who prefer an evening event, the After Hours Networking events are scheduled for the first Thursday of the month from 4:30 to 5:30 p.m. (unless a different day would work better for your business). By hosting an After Hours you agree to provide beverages/refreshments of your choice. The sponsorship for each event is \$50.00.

By hosting a networking event you will receive an advertisement in the monthly newsletter, a posting for 30 days in the weekly Chamber e-mail, a listing on the event calendar on the Chamber's website, and invitations to hand out to your customers or neighboring businesses. Morning Coffees and After Hours are offered on a first come first served basis. Please contact the Chamber office if you would like to sponsor an A.M. Connections or After Hours.

#### **2020 A.M. Connections Available:**

**July 14 September 15, October 13, November 10**

#### **2020 After Hours Available:**

**October 1, November 5**





# RAYTOWN NIGHT AT THE ROYALS

*ONE OF THE LARGEST COMMUNITY EVENTS FOR OVER 28 YEARS!*

A FUNDRAISER FOR THE RAYTOWN AREA CHAMBER OF COMMERCE & TOURISM

**FRIDAY, JUNE 26, 2020 7:05 P.M.**

KANSAS CITY ROYALS VS. CLEVELAND INDIANS

**OUTFIELD PLAZA SECTION \$ 27.00**

**VIEW RESERVE SECTION \$ 15.00**

**PARKING PASS \$12.00 (SAVINGS OF \$3.00)**

*\* TICKET PRICES SUBJECT TO CHANGE & AVAILABILITY \**



*Don't miss the fun and excitement -  
join your community for a great  
time at the "K"!*

- ★ Buck Night (hot dogs and peanuts for \$1.00)
- ★ Royals Summer Fireworks
- ★ Raytown Fire Protection District Color Guard
- ★ Businesses & groups selling 20 or more tickets  
get their name on the Royals Video Board!

**BUY YOUR TICKETS TODAY**



**For more information call the Chamber office, 816-353-8500  
or stop by to buy your tickets!** *Tickets are available on a first come first served basis.*



**5909 Raytown Trafficway**

**M-F 9:00am-4:30pm**

*Call first to make sure someone is in the office*

**2020 online tickets sales go on sale at the end  
of March! [www.Royals.com/Raytown](http://www.Royals.com/Raytown)**



*Raytown Area Chamber of Commerce & Raytown Rotary Club*

## GOLF TOURNAMENT



THURSDAY, JULY 30, 2020



## ROYAL MEADOWS GOLF COURSE

10501 E. 47TH ST - KANSAS CITY, MO 64133

### TOURNAMENT FORMAT:

- 11:00 a.m. Registration, lunch, putting contest, silent auction
- 1:00 p.m. Shot-gun start – 4 person scramble – multiple flights (no metal spikes, no denim attire, collared shirts required)
- Entry fee includes green fees, cart, lunch, awards reception
- Silent auction ends 15 minutes after last team finishes
- Awards ceremony & reception immediately following tournament
- Prizes awarded to 1st and 2nd in two flights

A very special Thank You to  
our "Title Sponsor"

*YOUR LOGO HERE*



### SPONSORSHIP OPPORTUNITIES

(All sponsorships include marketing in the Chamber Connections Newsletter, Facebook & Twitter posts plus what is listed below)

**Title Sponsor: (\$1,500) 1 Available** Includes business mentioned as Title Sponsor, logo on marketing material, company banner (if supplied by company), one hole sponsorship, a foursome in the tournament, signage at the event, opportunity to provide tee package items, and more. Limit of 1

**Lunch Sponsor: (\$1,000) 1 Available** Includes a foursome and signage during lunch

**Hole in One Sponsor: (\$500)** Includes signage on multiple holes.

**Beverage Cart Sponsor (2): (\$350)** Signage on a beverage cart. Opportunity to help distribute beverages to players.

**Awards Reception Sponsor: (\$300)** Signage at awards reception.

**Putting Contest Sponsor: (\$200)** Signage at putting contest

**Hole Sponsor: (\$100)** Signage prominently displayed at the tee box.

**Golf Cart Sponsor: (\$35)** Signage on a golf cart.



# Coronavirus Resources

- [Disaster Assistance Loans from the Small Business Administration](#)
- [SBA Direct link to application](#)
- [SBDC COVID-19 Updates](#)
- [Jackson County, Missouri](#)
- [Jackson County, Missouri Health Department](#)
- [CDC Guidelines](#)
- [MO Chamber Updates for Businesses](#)
- [Unemployment Resources \(Missouri\)](#)
- [MO Department of Health & Senior Services](#)
- [City of Raytown](#)

## WAYS TO SUPPORT LOCAL BUSINESS DURING CORONAVIRUS

### GIVE THE GIFT OF BUSINESS

If you usually frequent a business, buy a gift card that covers your usual patronage. Then spread out the use of those gift cards over time while you continue to support them as normal or give them away as gifts to people who might not normally go there.



### KEEP YOUR SUBSCRIPTION

If you have a subscription or membership to a gym, exercise class, painting class, music lessons, dance academy, etc, keep it going. Many small businesses rely on that support to keep their doors open and pay their bills. It's only a few weeks and your continued support can literally save their business.



### BUY NOW, PICKUP LATER

If you planned on buying a manufactured product like say a guitar, piece of clothing, whatever, give that business a call. Pay for it and have them set it aside for you to pick-up later.



### ASK HOW YOU CAN HELP

If you know the owners or employees personally, drop them a line and ask how you can help. They might have ideas for you to help that are specific to their business.



## COVID-19 Business Preparedness Checklist

### PRIORITIZE CRITICAL OPERATIONS

Be prepared to change your business practices if needed to maintain critical operations (e.g., identify alternative suppliers, prioritize customers, or temporarily suspend some of your operations).

### PREPARE FOR SCHOOL CLOSINGS

Pre-schools and K-12 schools may be dismissed. Determine how you will operate if absenteeism spikes from increases in sick employees and/or sick families.

### CREATE A COMMUNICATION PLAN

Put measures in place to effectively notify employees of the latest COVID-19 updates and information.

### ESTABLISH POSSIBLE TELEWORKING POLICIES

Review human resources policies and explore whether you can establish flexible worksites (e.g., telecommuting) and flexible work hours. Consider cancelling large work-related meetings or events.

### COORDINATE WITH STATE EXTERNAL & LOCAL EXTERNAL HEALTH OFFICIALS

The intensity of an outbreak may vary by location, and local health officials will be issuing guidance specific to their communities. Employers should learn about the plans in place in each community where they have a business.

For more information about the coronavirus visit [cdc.gov](https://www.cdc.gov)



# APRIL 2020

5909 RAYTOWN TRAFFICWAY  
RAYTOWN, MO 64133-3860

816-353-8500 FAX 816-353-8525  
RaytownChamber.com

SUNDAY	MONDAY	TUESDAY	WEDNESDAY	THURSDAY	FRIDAY	SATURDAY
			1 	2	3	4
5	6	7	8 virtual business after <b>hours</b> 4:30 to 5:30 pm	9 Board of Director's Meeting 8:00 am (Virtual)	10	11
12 	13	14	15	16	17	18
19 National Volunteer Week 19 - 25 	20	21	22 <i>Thank you!</i> Administrative Professionals Day	23	24 Deadline to add an item to the May Newsletter	25
26	27	28	29 **** Check your weekly Chamber Connections C-mail for an up-to-date Calendar ****	30		