

CHAMBER CONNECTIONS



#RaytownChamber90



MISSION STATEMENT

The Raytown Area Chamber of Commerce and Tourism supports our business community to enhance the quality of life for our citizens.

RAYTOWNCHAMBER.COM

DECEMBER 2020

2020 CHAMBER CORPORATE SPONSORS



Click on logos & links for more information

INSIDE THIS ISSUE:

Holiday Message, 50/50 Information and 2020 Corporate Sponsors	1
President's Corner	2
Member Market	3
The month in Photos	4
Capital Campaign Update & Rock Island Trail Construction Photos	5
Renewals & New Members	6
Mark Your Calendars - 2021	7
Members in the News & Updates	8-10
350 Highway Construction	11
Updates from Jackson County Health, State of MO and Kansas City	12
December Calendar	13



COMPLETED YOUR GIFT LIST YET?

Holiday Countdown Think Raytown First

Take the local holiday shopping pledge!

- I pledge to give the gift of local during this holiday season.
- I will buy my groceries local.
- I will buy a gift card from a local establishment.
- I will make a donation to a local charity in the name of a loved one.
- I will adopt a local family for the holidays.

HAPPY HOLIDAYS FROM THE
RAYTOWN CHAMBER BOARD OF
DIRECTORS AND STAFF



December 4, the winner will be notified by RallyUp, a leading online platform for creating professional fundraising experiences with peer to peer fundraising, built-in mobile giving and text to give. They use a certified randomization algorithm to draw winners on raffle campaigns. This ensures fairness and promotes ethical fundraising practices. By choosing, RallyUp - Members, Board Members, Staff and family were able to participate in the buying of raffle tickets.

50/50 FUNDRAISER

Raytown Chamber of Commerce
Building Foundation



He/she will be notified and the Building Foundation will make arrangements to deliver a check in the amount of \$1,937.25. Thank you to all who purchased raffle tickets. An email will be sent by the Chamber through Constant Contact for the Building Foundation late Friday afternoon announcing the winner. Who will it be?
Be looking for our next fundraiser this spring.



THINKRAYTOWNFIRST.COM

Board of Directors

Melvin Norrington, Chair
Everygy

Tamara Wheeler, Chair Elect
United Consumers Credit Union

Dr. Ryan Crider, Secretary/Treasurer
Metropolitan Community College -
Longview

Chiki Thompson, Past Chair
Raytown Water Co.

At Large Members

Kaylie Baker
Rok'it Advertising

Board Members

Robert Atkins
Farmers Insurance

Steve Dempsey
Missouri Job Center

Stephen Losey
HR Solutions On-Call Services

Patrick Nelson
Aviation Institute of Maintenance

Al Maddox
Cave Spring

Linda Roberts
Raytown Lee's Summit Community
Credit Union

Brian Ross
Edward Jones

Brian Wagler
ServPro of Raytown/East KC

Phylis Goforth, Liaison
Raytown Main Street Assoc.

Chief Matt Mace, Liaison
Raytown Fire Protection Dist.

Dr. Allan Markley, Liaison
Raytown Quality Schools

Missy Wilson, Liaison
City of Raytown

Staff

Vicki Turnbow, President
president@raytownchamber.com
staff@raytownchamber.com

PRESIDENT'S CORNER

Production of the 2021 Community Profile and Directory is well underway and will be printed this month. In 2021, we will be commemorating the Santa Fe Trail's 200th Anniversary and the State of Missouri's bicentennial. The front of the 2021 directory will have a logo that has been designed just for this event along with the first two pages providing some history on these two great milestones.



Raytown is lucky to have the Three Trails (Santa Fe, Oregon, California) running through it and soon the Rock Island Trail will cross the Three Trails at 63rd Street. Once the Rock Island Trail is open, we will begin to utilize this logo and tag line.

Stickers will be available for \$1.00 each.

2021 Budgets for both the Chamber and the Building Foundation have been approved and along with the 2021 Committee/Task Force signup sheet. Interested in a committee, the signup sheet will be in the January newsletter.

The Chamber's Strategic Plan will be finalized in December. It will be sent out in January and posted on the front of the Chamber's website. As a member, this document gives you an overall footprint of the business plan for the year.

Page 7 of this newsletter has a list of some networking events through June so if you are interested in a sponsorship—contact the Chamber today. This is a great way to market your business/organization. We will plan for in-person events in 2021 but will look at smaller groups to allow for social distancing if it is still in force.

Thank you to those who have taken the time to help others in our community. I am not going to mention any one person or group because I know I will miss someone. This is the reason I love Raytown.

As 2020 comes to a close and we look forward to 2021, I hope we take away some of the things we learned this year. We spent time outside, we cooked at home, we spent quality time with our spouses and our kids and we found that our opinion is just that - our opinion. Everyone is entitled to their own opinion and we should respect it. We want them to respect our opinions, don't we?

The Chamber office will be closed the last two weeks of December. I will be answering all emails and returning phone calls. Just like your business, the Chamber will have end of the month, end of the quarter and end of the year items that must be done.



Please remember my door is always open.

Call me at 816-353-8500 or send me an email,
president@raytownchamber.com.

BE KIND, BE PATIENT, BE RAYTOWN!

Vicki Turnbow, President

MEMBER MARKET



NEED A RENTAL HALL?

PARTIES ~ DANCES ~ RECEPTIONS ~ MEETINGS

\$100 discount with this ad!

OFFICE HOURS: Monday-Saturday 8 am-12 pm

5101 BLUE RIDGE CUTOFF 816-356-4962



Waste & Recycling Service for Home & Business



wcawaste.com

(816) 358-1211

Market your business to more than 400 Members in the CHAMBER CONNECTIONS.

Business card, 1/4 page, 1/2 page or full page
Space Available - 3 months or 1 year run
All marketing may include a website link.
All marketing must be prepaid.

Contact the Chamber for more information.

wowvaca.com  wowvaca.us

Waterfalls Of the World Vacations

Barb Keogh
General Manager
9358 E. 68th Street
Raytown, MO 64133

barb@wowvaca.com
(816) 406-9564



EMPLOYEE BENEFITS



EXCLUSIVE CHAMBER MEMBER INSURANCE PROGRAM

Save on group medical coverage and more with this exclusive program.

Why pay more for coverage when there are better options available to you as a Chamber member? You and your employees deserve the best insurance benefits at the best possible price. We can improve your program now – don't wait any longer. Call today!

- Savings for groups of 5 to 5,000 enrolled
- Exclusive group medical insurance programs
- In addition to medical, discounts available on dental, vision, disability, life, critical illness, accident, and pet
- Fully insured, level funded, and self-insured composite rates
- HSA / FSA/ COBRA Administration
- Ongoing support from your dedicated account team, access to our HR Help Desk, and compliance support
- Online reporting and enrollment services
- Onsite open enrollment



Kent Friend
Employee Benefits and Property & Casualty Consultant
kfriend@bukaty.com
P: 913.777.7535
C: 816.803.7406
F: 913.345.2608



November in Photos



Delivery of Membership Plaque to Kent Friend on location at SaddleCreek Stables & Vineyard.



Chamber/BF Board meeting 11/12/2020



Chamber/BF Board Retreat which included Committee Chairs 11/12/2020



November Zoom Luncheon 11/18/2020



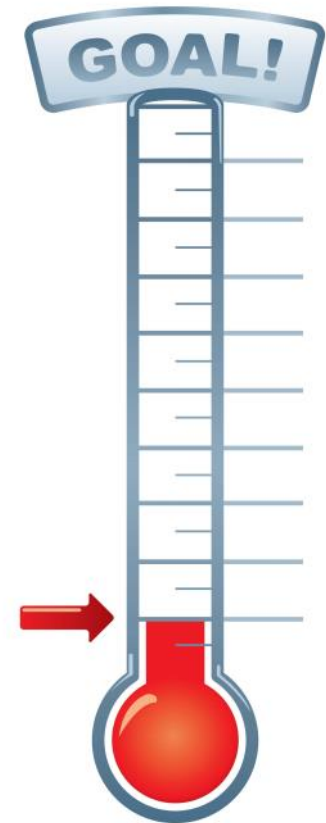
Welcome, Brooks L. Ross - born on 11/12/2020 to Brian and Vicki Ross (Edward Jones)

Building Capital Campaign Update & Rock Island Trail Photos

The 50/50 Split the Pot Raffle was a fun way to secure donations but be able to give a little back. We are looking into a fundraising event in the spring to benefit the Capital Campaign for the Building Foundation.

To date we have received pledges from over 65 organizations or individuals. Unveiling the Capital Campaign on March 1 just 12 days before COVID has made raising money challenging but it has made us grateful for every penny. Including all pledges and donations we currently are at **\$47,397.00 before adding in the split the pot funds**. If you need to donate to a qualified 501c3 before the end of the year, **contact Vicki today**. Remember all monetary donations will receive a charitable tax deduction letter from the Building Foundation. Several companies have reached out and offered discounts and even full donation of items which we greatly appreciate. We are still looking to raise funds for the next portion of the project, ADA accessibility for the building.

If you need a donation/pledge form or have questions, contact Vicki Turnbow at 816-353-8500 or email her at president@raytownchamber.com.



Rock Island Trail Construction Photos November 2020

Photos are of the bridges that will be put in place (or should be in place soon) north/west of Woodson.



CHAMBER RENEWALS

☺ *We would like to thank our members who gave 110%.*

- ☺ Associate Member, Charlotte Belger 2000
- ☺ Aviation Institute of Maintenance, Frederick Thomas, Patrick Nelson 2009
- ☺ Bickford Assisted Living, 1999 Valerie Reece
- Bordner Home Improvement, Rob Poettgen 1990
- ☺ Central Bank of Midwest (Independence location), 2007 Lana Sellers
- Hilton Garden Inn, Jody Mallinson 2019
- ☺ Maj-R Thrift & Discount Store, Rhonda Edwards, John Michaels 2016
- Raytown Arts Council, David Lush 2014
- ☺ Raytown-Lee's Summit Community Credit Union, 1992 Linda Roberts

- ☺ The Irish Pub, April Harrington 2007
- ☺ Truman Heartland Community Foundation, Phillip Hanson 1996



**Have you utilized your member benefits lately?
Thank you to those businesses who have donated 110% ☺**



Welcome to these new members

SaddleCreek Stables & Vineyard
Kent Friend
5915 Norfleet Road
Kansas City, MO 64133
816-803-7406
Kfriend62@aol.com
www.saddlecreekhorses.net
Recruited by: Vicki Turnbow

Associate Member
Terry Tuggle
Raytown, MO 64133
913-927-8551
terryt@hhcolorlab.com
Recruited by: Vicki Turnbow

HELP US GROW YOUR CHAMBER

NEW MEMBER REFERRALS NEEDED



Referrals can be companies you buy from companies that buy from you, or companies whom you have a connection with.

Help the Raytown Chamber continue to grow and be able to provide quality services to other businesses just like yourself.

Contact the Chamber office at 816-353-8500 or email staff@raytownchamber.com and we will contact them about joining the Chamber!

Mark Your Calendars - 2021

As we prepare for 2021, here are a few dates to put on the calendar. A more in-depth calendar will be sent out by separate email and will also be included in the January newsletter.

You will notice that some of the dates will include only a Zoom meeting and some will be in-person but Plan B will be to pivot to virtual depending on COVID.

2021 Luncheon Dates and Sponsors:

- January 27, 2021 - Zoom meeting - Rock Island Trail Update - Sponsor needed
- February 24, 2021 - Zoom meeting - Speaker to be determined - Sponsor needed
- March 25, 2021 - Chamber Celebration Luncheon at Connection Point Church - Everygy is the Chamber Celebration Sponsor - luncheon sponsor still needed and cost per person will be \$21.00
- April 22, 2021 - State of the City Luncheon at Connection Point Church - Everygy is the sponsor and cost per person will be \$21.00
- May 26, 2021 - Location and speaker to be determined - Sponsor needed
- June 24, 2021 - Combination luncheon with Grandview and South Kansas City Chambers - Details to be determined - Sponsor still needed

If you are interested in hosting a A.M. Connections (morning coffee) or After Hours - please contact the Chamber to talk about dates. The cost to sponsor one of these is only \$50.

New for 2021, we will have a different version of the “lunch and learn” type educational series. Each month from February through November, we will have a specific topic that you will learn about for one full hour. The cost per person will be \$15 and will include breakfast, lunch or even after hours food depending on when the “What’s on the Menu?” is held.

For instance: February 10 from 11:30 to 12:30, we will meet at Lutfi’s Friend Fish to learn all about Lutfi’s and how best to serve and blacken fish and find out exactly what Loretha Hayden and her crew offers to you the customer. The business has the opportunity to “teach” us the whole hour. Reservations will be required, limited to the first 30 and only \$15 per person which of course includes lunch. If you are a business and interested in one of these spots, contact the Chamber today. The cost is only \$50 and it gives you an entire hour with a dedicated group of attendees.

Our Members In The News & Updates



Winter Hours:

Monday-Tuesday: Closed

Wednesday-Friday: 4pm-8pm

Saturday: 11am-6pm

Sunday: 12pm-6pm

Friends,

Starting this week, we will be switching over to new Winter hours inside The Taproom.

We encourage visitors to enjoy the covered seating whenever possible. We highly encourage to-go sales and the use of our online store for those who prefer to get in and out. We also ask that you please support our culinary partners, Wilma's and Harp BBQ whenever possible.

We may make additional changes and we appreciate your patience. Winter is typically the slowest business season for breweries, and we appreciate your support through the coming months.

Love to you all! Chris Meyers www.cranebrewing.com

6515 Railroad Street, Raytown, MO 64133

The UPS Store

I woke up to a phone call from my security company at 2:00 am Wednesday, Aug 26 that the door had broken open at The UPS Store. When we arrived at the Center 63 shopping Center, there were 15 fire trucks, several police cars, and ambulances. They were in the process of putting out a

fire 2 doors down. Inside the store there were some ceiling tiles and insulation falling from the ceiling, a small window was broken. The fire department cut a couple holes in the roof to allow the smoke to leave the building.

My father was the Fire Chief at a volunteer fire department for most of my life. He was known to get on a roof and cut holes. I cannot help but think he was up there supervising. I cleaned up as much as I could so I could be open for business in the morning. I was misinformed that business would be as usual. I was soon to find out smoke causes a lot of damage.

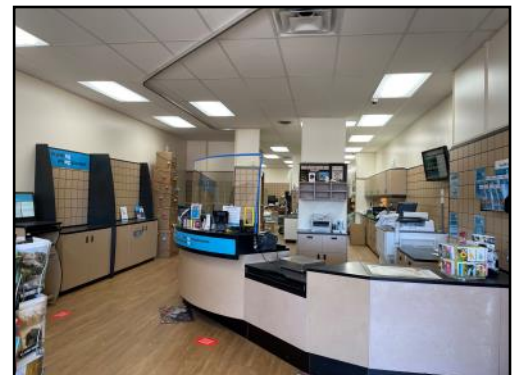
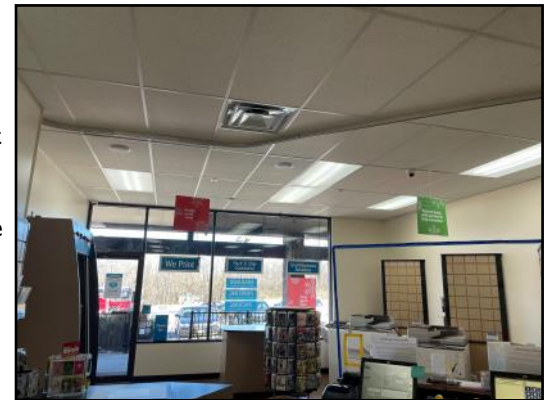
The rain in the next couple of weeks found its way into the store through the hole in the roof. It soaked the insulation and crumbled the ceiling tiles which fell onto the shipping systems and cash registers. Luckily, no one was hurt. The store was closed for the first week in November, but we were here for our 100+ mailbox customers to pick up their mail and packages. Then we completely cleaned, remodeled, and repaired the store. The copy machines and fax machines received cleaning and maintenance. All the ceiling tiles and insulation were removed. The rafters above

the ceiling were cleaned. All the fixtures and equipment were removed from the store for a thorough cleaning. Walls were cleaned and painted.

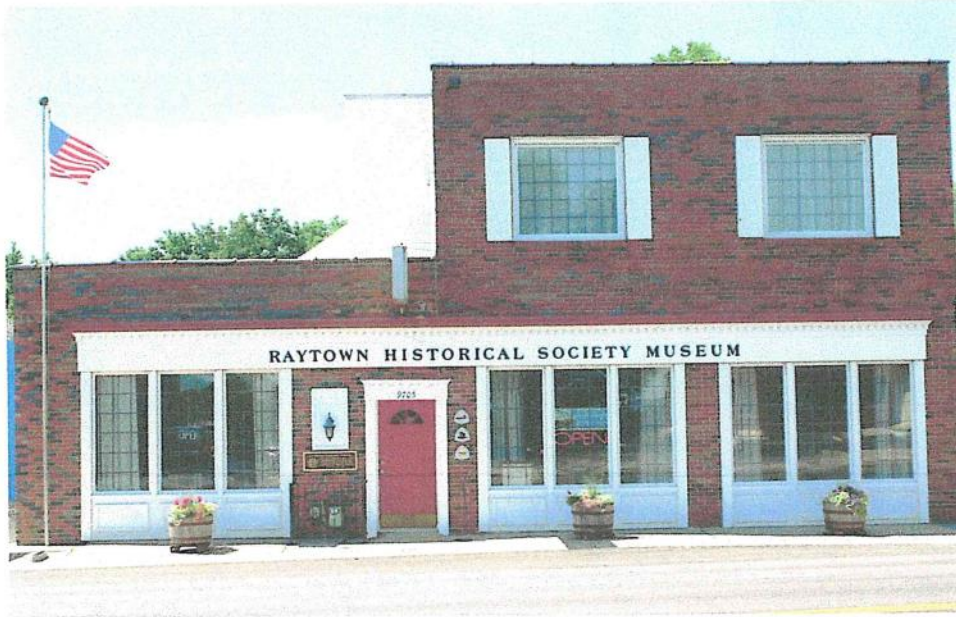
I ordered the new flooring that will be coming to all The UPS Stores. We are changing from carpet to the new LVT flooring. This is the first The UPS Store in the Kansas City Area to get it. We have all new ceiling tiles and insulation. It feels much brighter in here. And it smells great!

Come on in and see us at 6222 Raytown Trafficway. We can handle all your shipping needs along with printing and mailbox rentals.

Peggy Sundquist
816-743-8118



Our Members in the News & Updates



We are proud of our Raytown Historical Museum from the lovely Federalist style building to the treasures it holds inside. Documenting our city, its people, our beginnings, and the ongoing history is the unwavering goal.

We need your help in making sure we can continue to serve our community. Major repairs are needed to the face of the building and to maintain the running expenses to keep it open.

We are looking at a \$10,000 need. Please consider:

Donations of any size

New annual memberships at \$25.00 per yearly (when renewed each year, provide a continuous source support)

A Lifetime membership at \$200 pays for itself in 8 years, freeing you up for further donations to the Museum.

Mail Checks to:
Raytown Historical Society, PO Box 16652,
Raytown, MO 64133
raytownhistorical@sbcglobal.net
www.raytownhistoricalsociety.org

Our Members in the News & Updates



Celebrate Safely this Holiday Season

Local SERVPRO fire restoration specialist says use common sense and caution to help control risk of holiday season home fires

In a year when large holiday gatherings may not be possible, fire damage restoration specialist Chad Kimbley of SERVPRO of Raytown/East Kansas City says a focus on family decorating traditions and more intimate celebrations may take on extra significance. "It's as important to keep safety top of mind with a small family gathering as it is with a large holiday party," says Kimbley. "We all enjoy bringing the glow of the holiday season to our homes with Christmas trees or menorahs and candlelight, but these statistics from the U.S. Fire Administration¹ show how easy it is for home decorating to turn into a home disaster."

- * The top three days for home candle fires are Christmas Day, New Year's Day and New Year's Eve.
 - * More than half of the home decoration fires in December are started by candles.
 - * A heat source too close to the Christmas tree causes one in every four winter fires.
 - * On average, one of every 52 reported home Christmas tree fires resulted in death.

In addition to exercising caution with candles and heat sources, it is important to follow manufacturers' guidelines for holiday lighting, says Kimbley. "According to the National Fire Protection Association, electrical distribution or lighting equipment was involved in 44% of home Christmas tree fires.² Though Christmas tree fires may not be common, they can be devastating to more than the house itself. They can destroy irreplaceable photos, mementos, and family heirlooms and even cost lives," says Kimbley. "To help keep your holidays bright and your home and family safe, use common sense with candles and tree placement, and follow these important home decorating guidelines³."

- * Only use decorations that are flame-retardant or not flammable.
- * Check holiday lights each year for frayed wires or excessive wear.
 - * Don't link more than three strands of holiday lights.

"In a year when so many of the things we take for granted have changed, we know people will still come together – in person or virtually – to celebrate family and holiday traditions," says Kimbley. "'Stay safe' has become a common expression in the context of public health, but this holiday season, we urge all Lee's Summit-area home and business owners to think about 'staying safe' in their homes as they prepare for and enjoy the holiday season."

SERVPRO is an industry leader and provider of fire and water cleanup and restoration services. For more fire prevention and fire safety tips and information about fire and water damage restoration services, please visit www.servpro.com. For more information on SERVPRO of Raytown/East Kansas City, please contact Chad Kimbley at (816) 737-8776 or servpro9562@sbcglobal.net.

¹https://www.usfa.fema.gov/downloads/pdf/publications/holiday_infographic.pdf

²<https://www.nfpa.org/Public-Education/Fire-causes-and-risks/Seasonal-fire-causes/Winter-holidays>

³https://www.usfa.fema.gov/prevention/outreach/media/social_toolkits/toolkit_holiday.html

About SERVPRO

Founded in 1967, the SERVPRO franchise system is a leader and provider of fire and water cleanup and restoration services and mold mitigation and remediation. SERVPRO's professional services network of more than 1,800 individually owned and operated franchises responds to property damage emergencies ranging from small individual disasters to multi-million dollar large-loss events. Providing coverage in the United States and Canada, the SERVPRO system has established relationships with major insurance companies and commercial clients, as well as individual homeowners.

350 Highway Construction Updates

Hwy 350 and Raytown Road Public Improvements Construction Update

On September 30, 2020, one of Bank of America's driveway entrances, as well as the IHOP driveway, will be closed to public access.

The driveway will be closed 3 weeks for the installation of the new extended turn lane.

Please pay attention when using the other Bank of America driveways because temporary changes will be made to accommodate traffic flow during construction.

DRIVE SAFELY!



CONSTRUCTION PHASES:

PHASE 1 Improvements: Upon completion of Phase 1, Wal-Mart Drive will be expanded to two (2) left-turn lanes on to Westbound 350 Hwy. Curbs, sidewalks, and signage will be constructed along sections of Westbound and Eastbound 350 Hwy between Raytown Road and Wal-Mart Drive. Improvements will also be constructed at the intersection of 75th Street and Westbound 350 Hwy.

Times of Construction and Traffic Impact: Westbound 350 Hwy will have single lane closures between **9:00 am to 4:00 pm**. Eastbound 350 Hwy will have channelizers and pavement edge treatment modifying traffic between **8:30am to 3:30 pm**. 75th Street will maintain 2-way-2 lane traffic.

PHASE 2 Improvements: Completion of Phase 2 will result in Raytown Road having two (2) left-turn lanes on south-bound Raytown Road to Eastbound 350 Hwy. The median on Raytown Road between Westbound and Eastbound 350 Hwy will be expanded to permanently remove left-turn cut through across Raytown Road to 75th Street. The 75th Street exit off Eastbound 350 Hwy will also be eliminated in Phase 2. New curbs, as well as traffic pattern striping and signals, will be constructed on Raytown Road.

Times of Construction and Traffic Impact: Raytown Road between Westbound and Eastbound 350 Hwy will have single lane closure between **9:00 am and 4:00 pm**. Eastbound 350 Hwy will have single lane closures, as well as channelizers and pavement edge treatment when required, between **8:30am to 3:30 pm**.

PHASE 3 Improvements: The completed improvements will include the expansion of the bike and walking trail and sidewalk along the south side of Eastbound 350 Hwy. New traffic signal equipment and pedestrian signals will be installed at the intersections of Raytown Road and Westbound/Eastbound 350 Hwy. Additionally, the outer access road at the south-west corner of Eastbound 350 Hwy and Raytown Road will be converted to a pedestrian trail only. Raytown Road will be resurfaced between Westbound/Eastbound 350 Hwy and the median will be reconstructed on Raytown Road south of Eastbound 350 Hwy.

Times of Construction and Traffic Impact: Off-peak lane closures and channelizers will be utilized during this phase. Terms of the construction contract include construction delays due to winter weather, thus construction in December, January and February will be limited for lengths of times. The construction plans do not anticipate at any time closing all access drives to any Raytown businesses within the construction zone. Please come out and support the Raytown businesses during the various construction phases!

Construction updates will be posted on the City's website: www.raytown.mo.us .

Continued Updates from Jackson County & Kansas City

Whose in your bubble?

Your social circle or 'bubble' is much larger than you may think. As COVID-19 continues to spread, keep in mind that even small groups have risk. Keep doing your part to slow the spread by washing your hands, covering your face, and making space. [#HandsFaceSpace](#)



PROPERTY TAX STATEMENTS ARE AVAILABLE

DEC. 1, 2020

Go contactless and safely pay online.

Reminder that all Jackson County property tax bills have been sent out payments are due by Dec. 31, 2020. To avoid the [#longlines](#), pay your taxes online by visiting [jacksongov.org](#), or download the My Jackson County app (PayIT.) For more information on property tax bills please visit the link below.

<https://www.jacksongov.org/.../Tax-Bills-are-being-delivered>

CHRISTMAS IN THE PARK

Your drive begins at the Frank White Jr. Softball Complex, 3901 SW Longview Road at Longview Lake! Admission is free and open 5:30-10pm weeknights; 5:30-11pm weekends thru Jan 2.

There are 175 lighted and animated displays at [#christmasinthepark](#)!! If you have not been before, start a new holiday tradition. [#longviewlake](#)





DECEMBER

2020

5909 RAYTOWN TRAFFICWAY
RAYTOWN, MO 64133-3860

816-353-8500 FAX 816-353-8525
RaytownChamber.com

SUNDAY	MONDAY	TUESDAY	WEDNESDAY	THURSDAY	FRIDAY	SATURDAY
		1	2 Membership Services Meeting Noon (Zoom)	3	4	5
6	7	8	9	10 Chamber/BF Board Meeting 8:00 a.m. Zoom	11	12
13	14	15	16	17	18	19
20	21	22	23	24 Office Closed	25 Office Closed 	26 Office Closed
27 Office Closed	28 Office Closed	29 Office Closed	30 Office Closed	31 Office Closed	1 Office Closed 	