

# CHAMBER CONNECTIONS



#RaytownChamber90



## MISSION STATEMENT

The Raytown Area Chamber of Commerce and Tourism supports our business community to enhance the quality of life for our citizens.

[RAYTOWNCHAMBER.COM](http://RAYTOWNCHAMBER.COM)

MAY 2020

### 2020 CHAMBER CORPORATE SPONSORS



Click on logos & links for more information

### INSIDE THIS ISSUE:

Congrats! Seniors, Business Spotlight, 2020 Corporate Sponsors	1
President's Corner Message from the Board	2
Member Market	3
A Look at the Last 30 Days	4
Capital Campaign Update & Rock Island Trail Construction Photos	5
Renewals, New Members & Each One Reach One Campaign	6
Updates from the Members	7
Updates from the Members	8
Updates from the Members	9
Updates from the Members	10
Members in the News	11
Members in the News	12
Golf Tournament	13
Navigating the Road to Recovery	14
May Calendar	15



## CONGRATULATIONS SENIORS



FROM THE  
RAYTOWN AREA  
CHAMBER  
OF COMMERCE  
AND TOURISM



Coming Soon! The Raytown Chamber will be featuring a business through a new series called "Business Spotlight Premier". If you are interested please contact Vicki today! For Chamber members the cost is only \$100 and includes the following:

#### Business Spotlight includes:

- A 3-5 minute video business profile (business tour and/or interview)
  - Virtual Video Premiere Marketing
  - Promotion of video on social media (up to 10 times)
- **Special Members Only Bonus**
  - Video will be posted on the Raytown Chamber Website
  - Access to the video file for your use





[THINKRAYTOWNFIRST.COM](http://THINKRAYTOWNFIRST.COM)

*Board of Directors*

**Melvin Norrington**, Chair  
Everbgy

**Tamara Wheeler**, Chair Elect  
United Consumers Credit Union

**Dr. Ryan Crider**, Secretary/Treasurer  
Metropolitan Community College -  
Longview

**Chiki Thompson**, Past Chair  
Raytown Water Co.

*At Large Members*

**Kaylie Baker**  
Rok'it Advertising

*Board Members*

**Robert Atkins**  
Farmers Insurance

**Steve Dempsey**  
Missouri Job Center

**Stephen Losey**  
BeneFocus

**Al Maddox**  
Cave Spring

**Linda Roberts**  
Raytown Lee's Summit Community  
Credit Union

**Brian Ross**  
Edward Jones

**Brian Wagler**  
ServPro of Raytown/East KC

**Phylis Goforth**, Liaison  
Raytown Main Street Assoc.

**Chief Matt Mace**, Liaison  
Raytown Fire Protection Dist.

**Dr. Allan Markley**, Liaison  
Raytown Quality Schools

**Missy Wilson**, Liaison  
City of Raytown

*Staff*

**Vicki Turnbow**, President  
[president@raytownchamber.com](mailto:president@raytownchamber.com)  
[staff@raytownchamber.com](mailto:staff@raytownchamber.com)

**PRESIDENT'S CORNER**

Message from the Board of Directors:



Continue to be safe and healthy. I appreciate all the emails, phone calls and shout outs. As we phase into the road to Recovery, watch for more information to come out about **#SupportTheRaytownArea**. It will take all of us helping our businesses while maintaining social distancing., but we can do this together!

Remember my office is always open!  
*Vicki Turnbow, President*



# MEMBER MARKET



## NEED A RENTAL HALL?

PARTIES ~ DANCES ~ RECEPTIONS ~ MEETINGS

**\$100 discount with this ad!**

OFFICE HOURS: Monday-Saturday 8 am-12 pm

5101 BLUE RIDGE CUTOFF 816-356-4962



Waste & Recycling Service for Home & Business



wcawaste.com

(816) 358-1211

### Market your business to more than 400 Members in the CHAMBER CONNECTIONS.

Business card, 1/4 page, 1/2 page or full page  
 Space Available - 3 months or 1 year run  
 All marketing may include a website link.  
 All marketing must be prepaid.

Contact the Chamber for more information.

**Your business ad here!  
 Contact Chamber staff before  
 the 15th of the month to be in  
 next month's  
 Chamber Connection!**



# EMPLOYEE BENEFITS



## EXCLUSIVE CHAMBER MEMBER INSURANCE PROGRAM

Save on group medical coverage and more with this exclusive program.

Why pay more for coverage when there are better options available to you as a Chamber member? You and your employees deserve the best insurance benefits at the best possible price. We can improve your program now – don't wait any longer. Call today!

- Savings for groups of 5 to 5,000 enrolled
- Exclusive group medical insurance programs
- In addition to medical, discounts available on dental, vision, disability, life, critical illness, accident, and pet
- Fully insured, level funded, and self-insured composite rates
- HSA / FSA/ COBRA Administration
- Ongoing support from your dedicated account team, access to our HR Help Desk, and compliance support
- Online reporting and enrollment services
- Onsite open enrollment



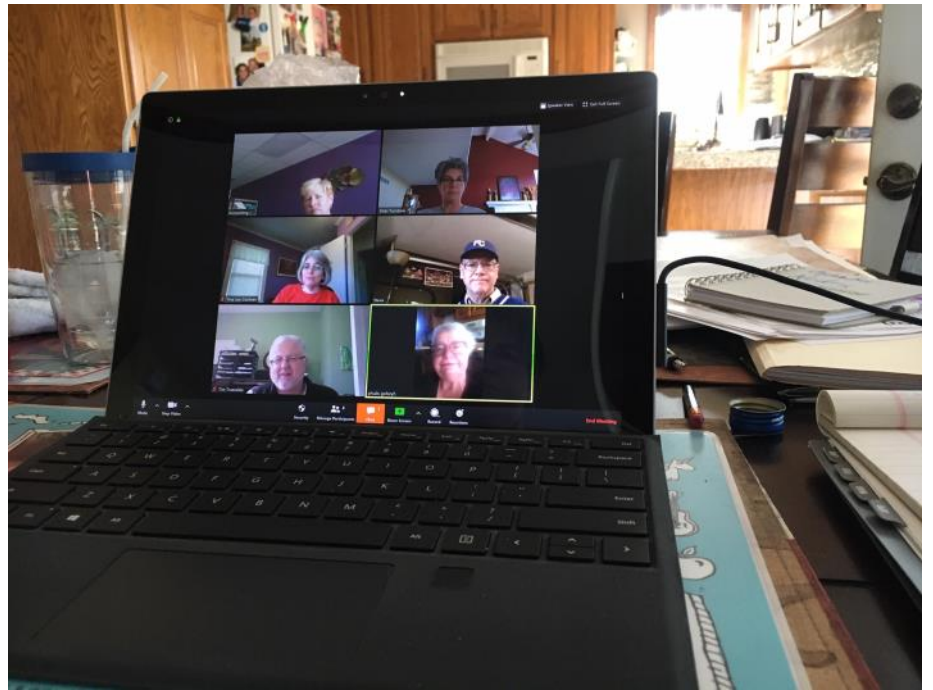
**Kent Friend**  
 Employee Benefits and Property & Casualty Consultant  
 kfriend@bukaty.com  
 P: 913.777.7535  
 C: 816.803.7406  
 F: 913.345.2608



# A Look at the Last 30 Days!

## virtual business after hours

The April 8 Virtual After Hours was a lot of fun and those attending were able to talk about what they are doing to keep business going, staying safe and supporting local.



### Photos from members during APRIL 2020

**wilma's & OPERATION BBQ RELIEF**  
good food

Chef Brett Atkinson of Wilma's Good Food join with OPERATION BBQ RELIEF to serve those in need.  
DRIVE THROUGH NO CONTACT MEAL PICKUP

CRANE BREWING  
6515 RAILROAD ST.  
RAYTOWN, MO 64133



Thank you for helping those in need in Raytown!  
Crane Brewing Company



Photo Courtesy of Mayor Mike McDonough



# Building Capital Campaign Update

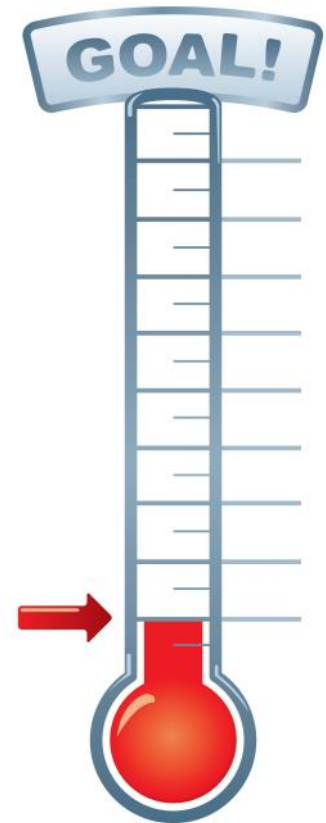
## Raytown Chamber of Commerce Building Foundation Capital Campaign Update

Thank you to those who have sent in their pledge form and/or made a donation to the Capital Campaign, that will be used to remodel the building from the outside in. Including all pledges and donations we currently are at \$7,500. We know it is a tough time to raise money, but we hope those individuals and/or businesses interested will still want to donate. Remember all monetary donations will receive a charitable tax deduction letter from the Building Foundation. An engraved plate will be placed in the area in the hallway at the office where the first plate is located from the early 90's.

The BF continues to research various grants with regards to handicapped entrances and building remodels. If you know of a grant the BF can apply for, let Vicki know.

If you need another copy of the Capital Campaign packet, let me know.

Questions, contact Vicki Turnbow at 816-353-8500 or email her at [president@raytownchamber.com](mailto:president@raytownchamber.com)



## Rock Island Trail Construction Photos April 2020



Looking south at 55th Street



Clearing at Crane - photo courtesy of Chris Meyers

**CHAMBER RENEWALS**

☺ *We would like to thank our members who gave 110%.*

CareNow Urgent Care, Drew Huffington, Angela Daniel,  
 Joey Palguta 2013  
 Clarks' Appliances, Pam Clark, Quentin Clark 1973  
 Comcast, Rayma Nesselrode, Tom Krewson 1981  
 ☺D.W. Newcomers Floral Hills, Kylie Newsom 1972  
 Guenther Mills Keating Architects, Steve Guenther 2001  
 ☺Learn A Lot Child Care Center 1, Teresa Givens 2013  
 ☺Learn A Lot Child Care Center 2, Teresa Givens 2015  
 Raytown Fire Protection District, Chief Matt Mace 1983  
 Raytown Parks and Recreation, Dave Turner 1980  
 River of Refuge, Pamela Seymour 2012  
 Spire, Jabbar Wesley 1991



**Have you utilized your member benefits lately?**

**NEW CHAMBER MEMBERS**

Laurel Heights Automotive  
 Justin Day  
 9109 E. Gregory Blvd  
 Raytown, MO 64133  
 816-353-9518  
[www.lhautorepair.com](http://www.lhautorepair.com)  
[lhautorepair2020@gmail.com](mailto:lhautorepair2020@gmail.com)

Auto Repair  
 Recruited by: Self



Thank you to the following Chamber member who have referred a business to us to contact about being a potential member:

**Refer a potential member and see your name here!**

**NEW MEMBER REFERRALS**

Referrals can be companies you buy from companies that buy from you, or companies whom you have a connection with.

Help the Raytown Chamber continue to grow and be able to provide quality services to other businesses just like yourself.

Contact the Chamber office at 816-353-8500 or email [staff@raytownchamber.com](mailto:staff@raytownchamber.com) and we will contact them about joining the Chamber!

**EACH ONE → REACH ONE**

- Who are your vendors?
- Who are some of your best customers?
- Who would benefit from sitting at this table?
- Who is in your contact list?



## Updates From Our Members

# GO FOR CONVENIENCE ARVEST GO

The Arvest Go mobile banking app gives you easier and faster control over your accounts.

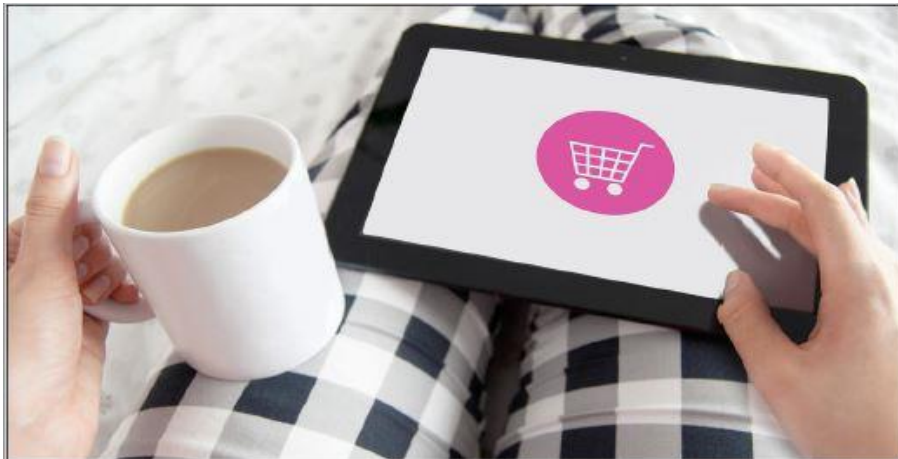
Download the Arvest Go app today!

(915) 261-2265  
arvest.com/go

ARVEST<sup>®</sup>  
BANK

Member FDIC

Fees, restrictions, and cut-off times may apply for some mobile banking services; visit [arvest.com](http://arvest.com) for more information. Messaging and data charges may apply, see your wireless carrier for details.



### Morgansites is Offering a Coronavirus **Small Business Recovery Plan**

Free 6-page e-commerce website.

Visit our website for details.

<https://morgansites.com>



We're Here to Help

**MORGANSITES**

Web Design & More

Serving Greater Kansas City | 816-630-8480

## Updates From Our Members

# SeneGence

PJs/SeneGence  
6310 Ash  
Raytown

**SKIN CARE**  
HAVE FLAWLESS SKIN WITH OUR  
POWERFUL ANTI-AGING SKIN CARE  
THE EVERYDAY ADVENTURER COSMETICS  
IMAGES BY SIARA'S PICS



Phylis Goforth  
816-536-7560

# UNITED WE MOVE. HOME WORK-INS

Live-Streamed Daily 4pm PT / 5pm MT / 6pm CT / 7pm ET



Join @PlanetFitness and tune in to their Facebook Live at 7 PM EST for FREE at-home workouts for anyone and everyone. Get moving with their trainers and even some surprise celebrity guests for a 20 minute workout to relieve stress and stay active. #UnitedWeMove



## Updates From Our Members



A safe place to  
receive care that  
can't wait



At HCA Midwest Health, we are committed to the safety of every patient, visitor and caregiver. Our [emergency rooms](#) continue to be safe and available for all patients seeking medical attention for urgent health concerns, whether COVID-19 related or not.

### Advanced protocols to protect you

We have been and will continue to be proactively engaged in the safe management of COVID-19. As part of our larger network, HCA Healthcare, we have put in place infection prevention protocols and safety measures that help protect our patients and colleagues at all of our facilities. One of the many ways we are doing this is by providing masks to anyone entering our hospital or emergency room.

### Expert emergency care 24/7

If you or a loved one are experiencing emergency symptoms of any kind it is both safe and necessary to seek medical attention right away. And if you experience severe symptoms such as chest pain or weakness or numbness in limbs, call 911 so your care can begin on the way to the hospital.

Our nine hospital-based ERs are conveniently located throughout the Kansas City region and our experts are quickly able to care for you and your loved ones of all ages.

[See ER locations and wait times](#)

## 24 Hour Emergency Response Services

- Catastrophic Storm & Wide Area Event Response
  - Large Loss & Single Event Response
  - Water Damage Services
  - **Biohazard** & Crime Scene Services
  - Fire Damage Services
  - Total Project Management
  - Coronavirus / COVID-19
- Contact Angie Geivett 816.267.2747 (1.800.SERVPRO)

SERVPRO RAYTOWN / EAST KANSAS CITY



## Updates From Our Members



### SERVICES OFFERED

Here is a brief list of services Bukaty has to offer businesses. During times like this, it is a good time to re-evaluate your insurance needs. Bukaty offers many resources to businesses.

1. Bukaty has some exclusive less-expensive options on Group Medical coming available that company's may want to take a look at.
2. Bukaty can adjust their premiums on their commercial policies due to less payroll and less sales.
3. Do you have D&O/Errors and Omissions? If yes, this is a good time to check on that policy and see what is and is not covered. D&O / Errors and Omissions need to also be in place to protect them from frivolous lawsuits of employees claiming that the company put them in a harmful position regarding COVID-19.
4. Don't forget to put into place proper hygiene/ facility cleanliness processes at your business.
5. If employees choose to not come back to work... claiming they are scared or have child care issues or they are making more money on unemployment.... we need to guide the employer thru that process... the employer should not be held hostage by employees! But there are things that have to be properly.... to protect the employer. Questions on this? Contact Bukaty today!

#### Kent Friend

National Strategic Benefit Consultant  
Commercial Property & Casualty

4601 College Boulevard, Suite 100 | Leawood, KS 66211

Direct: **913.777.7535** | Cell: 816.803.7406

[KFriend@bukaty.com](mailto:KFriend@bukaty.com)

[www.bukaty.com](http://www.bukaty.com)

Connect with us on [LinkedIn](#)

## TEMPORARY LAYOFF VIRTUAL WORKSHOP FOR EMPLOYEES HELD DAILY MONDAY-FRIDAY 10 A.M. - 2 P.M.



**Click here to register!**

Contact your local Job Center: (888)728-5627

Join the Missouri Office of Workforce Development for one-on-one online assistance in applying for unemployment insurance, temporary financial assistance that may be available, and online job search workshops and resources. Follow the [registration steps](#), or [download the user guide](#) to create a registration in our MoJobs system if you don't already have one.



For additional information about Missouri Office of Workforce Development services, contact a Missouri Job Center near you. Locations and additional information are available at [jobs.mo.gov](http://jobs.mo.gov) or 1-888-728-JOBS (5627).

The Missouri Department of Higher Education and Workforce Development is an equal opportunity employer/program. Auxiliary aids and services are available upon request to individuals with disabilities. Missouri Relay 711.



## *Our Members in the News*



### Board of Education Approves Naming of Herndon Career Center Culinary Arts Facility and Student-Run Restaurant

The Herndon Career Center culinary arts training facility will officially be named the Herndon Career Center Institute of Culinary Arts and the student-run restaurant, which will be located inside of the institute and open on select dates, will be named Cinder. The names of the institute and student-run restaurant were selected by a committee made up of Board of Education members, Herndon Career Center staff members, and professionals in the field of culinary arts who assist the Herndon Career Center culinary arts program. The Raytown School District Board of Education voted to approve the naming of both the training facility and restaurant at the Board of Education meeting on April 13.

Herndon Career Center Director Dr. Cheryl Reichert shared the meaning behind the naming of the training facility.

“When naming the facility, the committee wanted a name that signified that students will continue to learn a baseline of culinary skills and knowledge with high levels of expectations and opportunities ahead of them. The Herndon Career Center Institute of Culinary Arts was selected as the students will be embarking on their culinary careers in the new facility,” said Dr. Cheryl Reichert.

When the discussion turned to the naming of the restaurant, the committee wanted a name that had a tie to the roots of the building design, the history of Raytown, and the training and education in the trades that happens at Herndon Career Center. The committee also sought feedback from community members on the naming of the restaurant.

“With Raytown being founded by a blacksmith and the dining room design incorporating this as a base point, the committee thought Cinder spoke to the history while also being a name that is unique and will be identifiable for years to come,” said Dr. Cheryl Reichert.

The Herndon Career Center Institute of Culinary Arts was on the list of Strong Bonds, Bright Futures projects approved by the voters in April 2019 and is set to open in the fall of 2020.

In February, the Herndon Career Center Culinary Arts team earned first place out of 18 teams at the ProStart Culinary Missouri State Competition held in Springfield, Missouri. The team was set to represent the state of Missouri in the National ProStart Invitational in Washington D.C., in May, before the competition was cancelled due to COVID-19.

In 2018, the Herndon Career Center Culinary team earned the title of national champions and each student received \$200,000 in scholarship funds. In 2019, the team came in second in the national competition. In the last three years, students on the culinary and culinary management teams have earned a combined total of \$2,224,000 in scholarship funds.



The Herndon Career Center Culinary Arts program is under the direction of Chef Mike Chrostowski.

*Congratulations*

## Our Members in the News



# THANK YOU!!

The employees of [First Federal Bank of Kansas City \(Raytown Branch located at 9330 E. Gregory Blvd\)](#) delivered lunch to a great group of folks who are VOLUNTEERING their time, to give back to the community! They thank Hope Network located at Connection Point Church for allowing them to give a small token of their gratitude for all their hard work. (Is that Carmen Kraus waving in the background?)

Michele Workman Executive Director of [Hope Network](#) indicated: *Our distribution volunteers and church facility workers were very excited to be able to have a break to sit down and enjoy a quick bite after our big distribution today.*

*We served 97 vehicles two bags of pantry staples, a half a gallon of milk, two meat choices, a bag of bread, a bag of produce, and a bag of snacks as well as a Backsnacks from Harvesters if they had children.*

*It's been a lot of fun serving the families of Raytown through this distribution process. We've been able to meet people we've never served before and they are so grateful and so gracious to wait in the long line for their turn for a bag.*

### RAYTOWN COMMUNITY FEEDING PROGRAM

Information is current as of 4/27/20 and could change at any time

#### RAYTOWN SCHOOLS DAILY MEAL PLAN

Monday-Friday from 11:30am - 1:00pm

#### LOCATIONS:

- Eastwood Hills Elementary School**  
5290 Sycamore Ave, Kansas City, MO 64129
- Norfleet Elementary School**  
6140 S Norfleet Rd, Raytown, MO 64133
- Robinson Elementary School**  
6707 Woodson Rd, Raytown, MO 64133
- Southwood Elementary School**  
8015 Raytown Rd., Raytown, MO 64138
- Westridge Elementary School**  
8500 E 77th St, Kansas City, MO 64138

Raytown Food Services will provide a breakfast and lunch meal for Raytown students during our school closure.

Parents can drive up to one of the elementary locations and receive a breakfast and lunch for each Raytown student PK-12 in their family.

Questions can be directed to [foodservices@raytownschools.org](mailto:foodservices@raytownschools.org).

For more information visit [www.raytownschools.org/domain/1809](http://www.raytownschools.org/domain/1809)



### RAYTOWN COMMUNITY FEEDING PROGRAM

Information is current as of 4/27/20 and could change at any time

#### GRACEWAY

Graceway Groceries  
Sunday 4:00-5:30pm (or until gone)  
**Graceway Church**, 5460 Blue Ridge Cut-Off Kansas City, MO 64133  
Curbside Grocery pick up. Do not exit your vehicles, groceries will be brought to you. You do not need an ID.  
[www.facebook.com/visitgraceway](http://www.facebook.com/visitgraceway)



#### REAP (RAYTOWN EMERGENCY ASSISTANCE PROGRAM)

REAP Lunches & Groceries  
Lunches: Monday-Thursday from 11:30am-12:30pm (or until gone)  
Groceries: Fridays from 11:30am-12:30pm (or until gone)  
**REAP**, 9300 E. 75th St., Raytown, MO 64138  
Please Park on the right side of 75th St. and follow the drive thru directions. Do not exit your vehicles, the lunch/groceries will be brought to you. You do not need an ID.  
[www.facebook.com/REAPRaytown](http://www.facebook.com/REAPRaytown) | 816-356-0054



#### RAYTOWN COMMUNITY FOOD MINISTRY

Raytown Summer Lunch Program & Grocery Bag (Lunch Items)  
Tuesdays from 4:00-6:00pm (or until gone)  
**Raytown Christian Church**, 6108 Blue Ridge Blvd  
Service provided curbside in the parking lot by the ramped entrance. Do not get out of your car one bag of groceries will be brought to you. You do not need an ID.  
[www.facebook.com/RaytownSummerLunchMinistry](http://www.facebook.com/RaytownSummerLunchMinistry)



#### HOPE NETWORK/CONNECTION POINT CHURCH

Food Bag distribution  
Wednesdays from 11:00am-1:00pm (or until gone)  
**Connection Point Church**, 10500 E. 350 Hwy Raytown, MO 64138  
Families may pull around the circle drive toward the back of the Connection Point Church Raytown Campus and pick up two bags located just inside the door. Only one family at a time. You do not need an ID.  
[www.facebook.com/hopenetworkraytown](http://www.facebook.com/hopenetworkraytown) | 816-778-1105



#### THE RAYTOWN UNITED FOOD MINISTRY

Food Bag distribution  
Thursdays from 11:00am-1:00pm (or until gone)  
**Seed of Faith International**, 9301 E 87th St, Raytown, MO 64138  
The Raytown United Food Ministry is a partnership between several area churches and businesses that distributes food bags to families in their vehicles via our no-contact method. You do not need an ID.  
[timmyhenzel@gmail.com](mailto:timmyhenzel@gmail.com)



Thank you to the Raytown community for taking care of those in need!



*Raytown Area Chamber of Commerce & Raytown Rotary Club*

## GOLF TOURNAMENT



THURSDAY, JULY 30, 2020



## ROYAL MEADOWS GOLF COURSE

10501 E. 47TH ST - KANSAS CITY, MO 64133

### TOURNAMENT FORMAT:

- 11:00 a.m. Registration, lunch, putting contest, silent auction
- 1:00 p.m. Shot-gun start – 4 person scramble – multiple flights (no metal spikes, no denim attire, collared shirts required)
- Entry fee includes green fees, cart, lunch, awards reception
- Silent auction ends 15 minutes after last team finishes
- Awards ceremony & reception immediately following tournament
- Prizes awarded to 1st and 2nd in two flights

A very special Thank You to  
our "Title Sponsor"

YOUR LOGO HERE



### SPONSORSHIP OPPORTUNITIES

(All sponsorships include marketing in the Chamber Connections Newsletter, Facebook & Twitter posts plus what is listed below)

**Title Sponsor: (\$1,500) 1 Available** Includes business mentioned as Title Sponsor, logo on marketing material, company banner (if supplied by company), one hole sponsorship, a foursome in the tournament, signage at the event, opportunity to provide tee package items, and more. Limit of 1

**Lunch Sponsor: (\$1,000) 1 Available** Includes a foursome and signage during lunch

**Hole in One Sponsor: (\$500)** Includes signage on multiple holes.

**Beverage Cart Sponsor (2): (\$350)** Signage on a beverage cart. Opportunity to help distribute beverages to players.

**Awards Reception Sponsor: (\$300)** Signage at awards reception.

**Putting Contest Sponsor: (\$200)** Signage at putting contest

**Hole Sponsor: (\$100)** Signage prominently displayed at the tee box.

**Golf Cart Sponsor: (\$35)** Signage on a golf cart.



## *Navigating the Road to Recovery*



With the Raytown Chamber having members in all parts of the metropolitan area, we feel that sharing information is the best way to keep you informed. We do **NOT** want to confuse you. If you sit in the **City** limits of Raytown, you are to be following the guidelines as stated per Jackson County.

**Start planning now if you have not already. Some things to think about:**

1. **Talk to your employees. Come up with a plan on getting them back to work**
2. **Build your COVID-19 Plan / Share your plan / Post your plan**
3. **Respect social distancing with your employees and your customers**
4. **Create a cleaning schedule**

**If you have any questions, please contact Vicki at the Chamber today! Share this information with other businesses no matter if they are a member or not.**

**Here are some links with regards to a safe return to work and play. Remember it will take all of us doing our part. All of these links and documents are as of April 30, 2020. Make sure to check back often as this is a fluid situation with changes happening daily. As of the issuance of this newsletter, Jackson County remains under a Stay At Home order through May 15.**

- [#SafeReturnKC \(A Guide for Responsible Re-Entry to the Workplace\)](#)
- [Rules for ReOpening KCMO—10/10/10 \(as of 04/30/2020\)](#)
- [Return to Work Guide from the MO Chamber of Commerce](#)
- [Missouri's "Show Me Strong Recovery Plan"](#)
- [SBDC COVID-19 Updates](#)
- [Jackson County, Missouri](#)
- [Jackson County, Missouri Health Department](#)
- [Unemployment Resources \(Missouri\)](#)
- [MO Department of Health & Senior Services](#)
- [City of Raytown](#)












# MAY 2020

5909 RAYTOWN TRAFFICWAY  
RAYTOWN, MO 64133-3860

816-353-8500 FAX 816-353-8525  
RaytownChamber.com

SUNDAY	MONDAY	TUESDAY	WEDNESDAY	THURSDAY	FRIDAY	SATURDAY
					1 	2
3	4	5	6	7	8  	9
10 	11	12	13	14 Chamber/BF Board of Directors Virtual Meeting 8:00 a.m.	15	16
17	18	19  Clark's Appliances	20 	21	22	23
24	25 	26	27	28	29	30/31